

0CNP3-M80000EN

## Directions for the Parts Catalog.

- The parts stipulated in this Parts Catalog are not necessarily standard equipped parts.
- Parts may change without prior notice.
- The following is an example of the Parts Catalog format.

REF.	LEV.	PARTS NO.	DESCRIPTION	Q'TY						I	R
				(A)	(B)	(C)	(D)	(E)	(F)		
1	1	729595-51390	FUEL INJECTION PUMP	1	1	1	1	1			1
1-1	1	729595-51391	FUEL INJECTION PUMP	1	1	1	1	1		N	1
		(A=E00185) (B=E00200)									
3	2	26022-060162	SCREW M 6X 16	9	9	9	9	9			
3-1	2	26022-060162	SCREW M 6X 16	4	4	4	4	4		K	
		(A=E00156) (B=E00156) (C=E00156) (D=E00156) (E=E00156)									
4	2	129470-51040	CAMSHAFT	1	1	1	1	1			
5	2	122710-51050	BEARING, ROLLER	2	2	2	2	2			
6	2	129470-51060	RETAINER	1	1	1	1	1			

Remarks
(1) BOOST COMPEMSATOR TYPE. OPTIONAL PART, TO E00155,(4JH-DT, 4JH-DTZ

### ① Ref. No.

The Ref. No. listed may not be in accordance with the illustration Ref. No.

(Ex.) Illustration No.

List Ref No.

1

1

(Before change)

1-1

(After change)

For interchangeable symbols N, R and K, illustrations for new parts may be abbreviated.

### ② Lev. (Level)

Level indication

The numbers below indicate the level of relativity towards the main part.

1 ----- Main parts (Assembly parts)

2 ----- Sub component included in " 1 ".

3 ----- Sub component included in " 2 ".

Note) Parts that are not for sale are partially illustrated but not listed.

### ③ Interchangeability Mark

When a part change takes place, one of the following interchangeability symbols is indicated beside the part.

Symbol	Interchangeability	Contents note
N	Old $\begin{matrix} \leftarrow \text{Yes} \\ \text{No} \rightarrow \end{matrix}$ New	New Part is interchangeable for Old Part but Old Part is not interchangeable for New Part.
Q	Old $\begin{matrix} \leftarrow \text{No} \\ \text{Yes} \rightarrow \end{matrix}$ New	New Part is not interchangeable for Old Part but Old Part is interchangeable for New Part.
R	Old $\begin{matrix} \leftarrow \text{Yes} \\ \text{Yes} \rightarrow \end{matrix}$ New	New/ Old Parts are both interchangeable.
S	Old $\begin{matrix} \leftarrow \text{No} \\ \text{No} \rightarrow \end{matrix}$ New	New/ Old Parts are both not interchangeable.
W		Part newly added.
Z		Part discontinued.
F		Not interchangeable by a single part but interchangeable together with related parts.
K		Changes only for used parts quantities.

### ④ Effective Machine No.

When a part changes, the effective Machine No. will be indicated in the (A)-(F) column.

Product Symbol	Product No.	Product Symbol	Product No.
C	Clutch No. Compressor No.	F	Machine No. (Agricultural Equip.)
D	Drive No.	M	Machine No.
E	Engine No.		

Note 1) A date may follow the symbol. (Ex.) 1996.01

Note 2) "XXXXX" and "ZZZZZ" are for parts that could not be predicted or for engine models that could not be identified.

Note 3) (A=E00185) is the E (Engine Serial Number) for the column (A) model (in this case 4JH-DT) after the parts design change.

### ⑤ Remarks Mark

Figures or alphabets (symbols) are entered in the remarks column.

The comments (remarks) on parts that are indicated at the bottom of the illustration are the same symbols as those stated above.

# Contents

Fig. No.    Fig. Name

## ENGINE SECTION

1. CYLINDER BLOCK
2. CYLINDER HEAD & BONNET
3. TOOL & LABEL
4. AIR CLEANER & MUFFLER
5. CRANKSHAFT,PISTON & CAMSHAFT
6. FUEL TANK & FUEL LINE
7. CARBURETOR
8. GOVERNOR & CONTROL DEVICE
9. FLYWHEEL MAG.& STARTING DEVICE

## PULLEY & TENSION SECTION

10. TENSION ARM
11. PULLEY

## FRAME SECTION

12. BODY FRAME

## TRAVELING SECTION (1)

13. IDLER
14. TRACK ROLLER

## CONTROL SECTION

15. HANDLE
16. TRAVEL CLUTCH LEVER

Fig. No.    Fig. Name

17. BRAKE LEVER
18. MAIN CHANGE LEVER
19. SIDE CLUTCH LEVER
20. DEADMAN LEVER

## PLATFORM CARRIER SECTION

21. HYDRAULIC PUMP
22. HYDRAULIC CYLINDER
23. PLATFORM CARRIER
24. PLATFORM CARRIER
25. PLATFORM CARRIER

## TOOLS,ACCESSORIES & LABELS SECTION

26. LABELS
27. TOOLS & ACCESSORIES

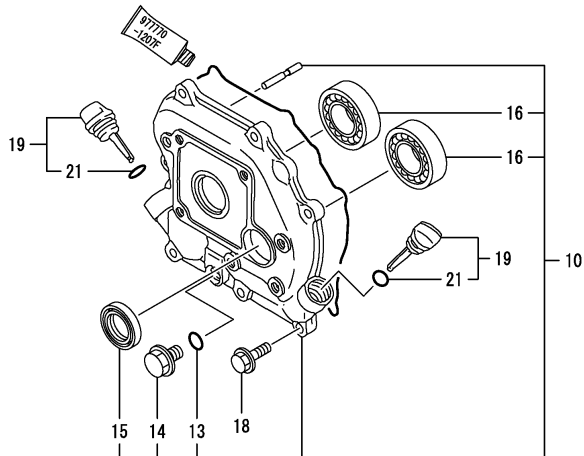
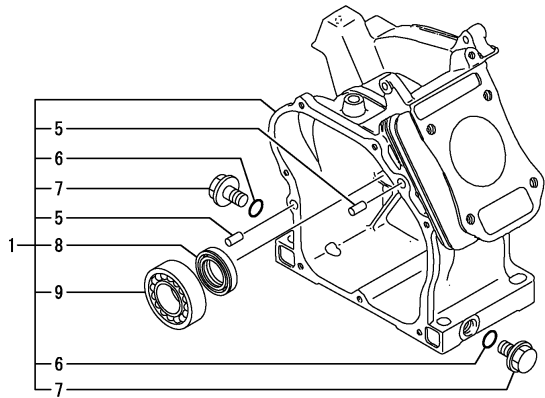
## TRAVELING SECTION (2)

28. TRANSMISSION CASE
29. MAIN SHAFT
30. TRANSMISSION SHAFT B
31. SIDE CLUTCH SHAFT
32. AXLE
33. BRAKE
34. SIDE CLUTCH
35. MAIN CHANGE

Fig.1. CYLINDER BLOCK

(A)=GA110E-SCK  
(B)=  
(C)=

(D)=  
(E)=  
(F)=



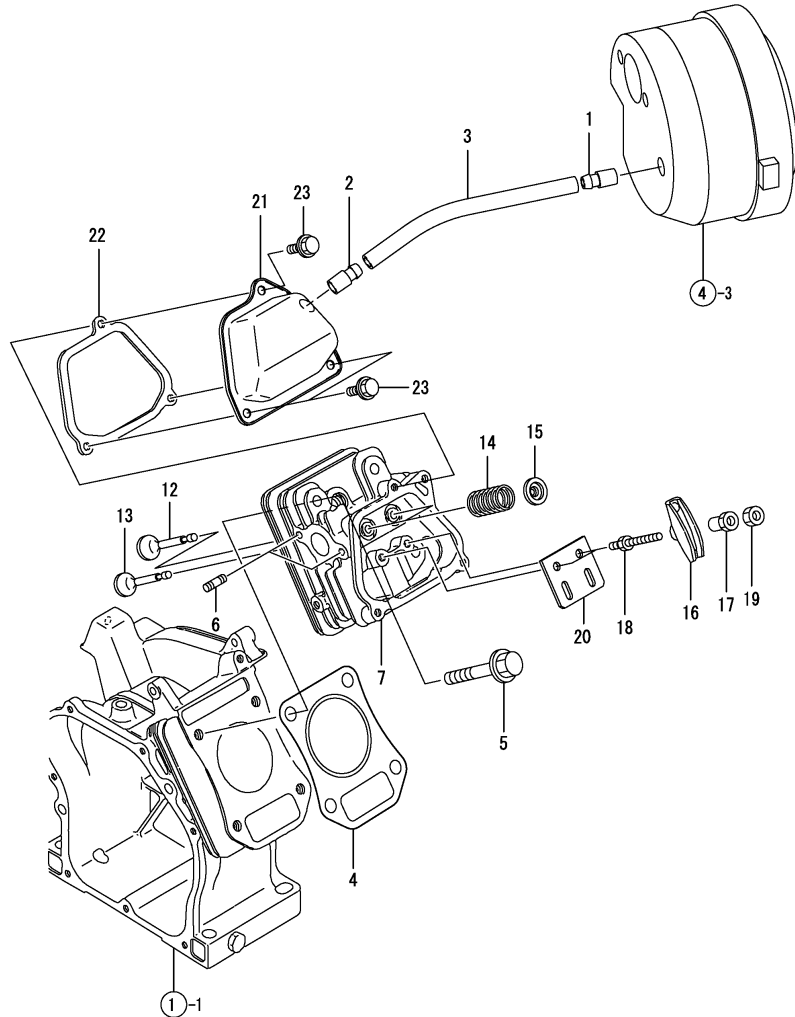
No.	Lev.	Parts No.	Description	Q'ty						I	R
				(A)	(B)	(C)	(D)	(E)	(F)		
1	1	760498-01560	BLOCK ASSY, CYLINDER	1							
5	2	114270-01600	PIN, M8X12	2							
6	2	24311-000100	O-RING, 1AP10.0	2							
7	2	26106-100162	BOLT, M10X 16 PLATED	2							
8	2	160510-02220	SEAL, TC17306	1							
9	2	24101-062030	BEARING, BALL 6203C3	1							
10	1	760490-01500	COVER ASSY	1							
13	2	24311-000100	O-RING, 1AP10.0	1							
14	2	26106-100162	BOLT, M10X 16 PLATED	1							
15	2	160510-02220	SEAL, TC17306	1							
16	2	24101-062030	BEARING, BALL 6203C3	2							
18	1	26476-060202	SCREW, TAPPING M6X20	7							
19	1	160611-01740	CAP ASSY	2							
19-1	1	160611-01741	CAP ASSY	2							R
(A=E012758)											
21	2	24311-000150	O-RING, 1AP15.0	2							
21-1	2	160490-01760	O-RING	2							R
(A=E012758)											

Remarks  
(REMARKS)"EFFECTIVE MACHINE NO." OF  
ENGINE IS INDICATED ON THE  
ENGINE LABEL WHICH IS SHOWN  
IN FIG.9.

Fig.2. CYLINDER HEAD & BONNET

(A)=GA110E-SCK  
(B)=  
(C)=

(D)=  
(E)=  
(F)=



No.	Lev.	Parts No.	Description	Q'ty						I	R
				(A)	(B)	(C)	(D)	(E)	(F)		
1	1	160520-03050	BREATHER	1							
2	1	160610-03050	BREATHER ASSY	1							
3	1	160510-03180	PIPE , BREATHER	1							
4	1	160498-01330	GASKET, HEAD	1							
5	1	160610-04201	BOLT, FLANGE M8X53	4							
6	1	160610-04620	BOLT, M6X16	2							
7	1	160490-11010	HEAD ASSY, CYLINDER	1							
12	1	160664-11100	VALVE, INTAKE	1							
13	1	160664-11110	VALVE, EXHAUST	1							
14	1	160490-11120	SPRING, VALVE	2							
15	1	160664-11180	RETAINER, SPRING	2							
16	1	160699-11200	ARM, ROCKER	2							
17	1	160690-11221	PIVOT, ROCKER ARM	2							
18	1	160690-11271	BOLT	2							
19	1	160690-11280	NUT, M6X0.5	2							
20	1	160490-11290	PLATE, GUIDE	1							
21	1	160490-11300	BONNET	1							
22	1	160490-11310	GASKET, BONNET	1							
22-1	1	160490-11311	GASKET, BONNET	1							R
(A=E009841)											
23	1	26476-060142	SCREW, TAPPING M6X14	3							

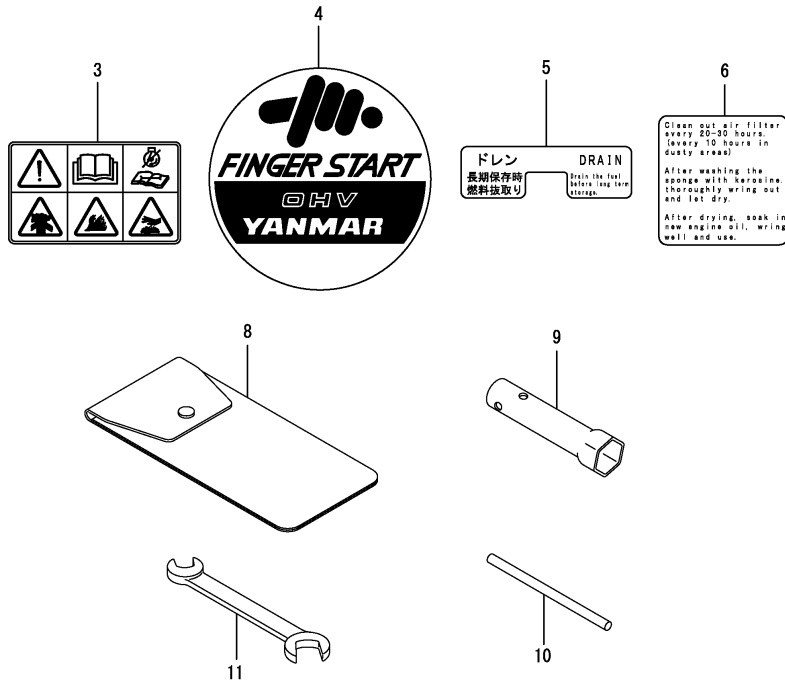
Remarks  
(REMARKS)"EFFECTIVE MACHINE NO." OF  
ENGINE IS INDICATED ON THE  
ENGINE LABEL WHICH IS SHOWN  
IN FIG.9.

Fig.3. TOOL & LABEL

(A)=GA110E-SCK  
(B)=  
(C)=

(D)=  
(E)=  
(F)=

No.	Lev.	Parts No.	Description	Q'ty						I	R
				(A)	(B)	(C)	(D)	(E)	(F)		
3	1	160991-07260	LABEL	1							
4	1	160798-07100	LABEL, FINGER START	1							
5	1	160690-07260	LABEL, DRAIN	1							
6	1	160664-07370	LABEL, AIR CLEANER	1							
8	1	160110-92610	BAG, TOOL	1							
9	1	160120-92700	WRENCH, 21 L86	1							
10	1	160110-92710	HANDLE, WRENCH	1							
11	1	28110-100120	SPANNER, 10X12	1							

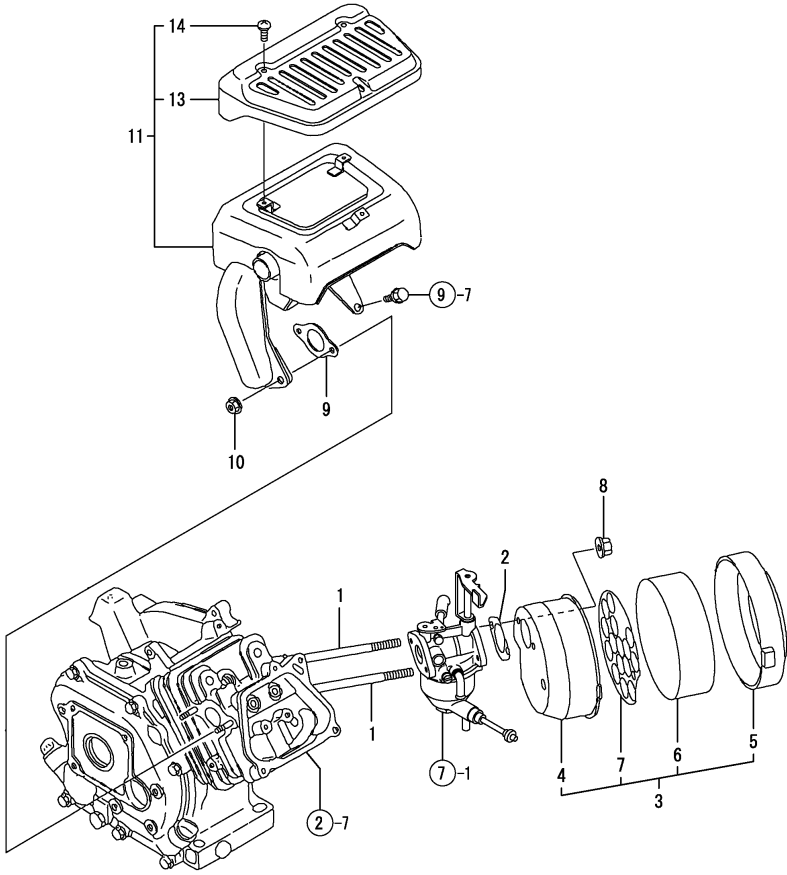


Remarks  
(REMARKS)"EFFECTIVE MACHINE NO." OF  
ENGINE IS INDICATED ON THE  
ENGINE LABEL WHICH IS SHOWN  
IN FIG.9.

Fig.4. AIR CLEANER & MUFFLER

(A)=GA110E-SCK  
(B)=  
(C)=

(D)=  
(E)=  
(F)=



No.	Lev.	Parts No.	Description	Q'ty						I	R
				(A)	(B)	(C)	(D)	(E)	(F)		
1	1	160610-04570	BOLT, M6X70	2							
1-1	1	160790-04600	BOLT, M6X75	2							N
(A=EXXXXX)											
1-2	1	160690-04610	STUD, 2D6X72	2							N
(A=EXXXXX)											
1-3	1	26226-060752	STUD, M6X 75	2							N
(A=EXXXXX)											
2	1	160492-12050	GASKET	2							
3	1	160490-12500	CLEANER ASSY, AIR	1							
4	2	160490-12520	BODY, AIR CLEANER	1							
5	2	160610-12530	CAP, AIR CLEANER	1							
6	2	160610-12540	ELEMENT	1							
7	2	160610-12550	HOLDER, ELEMENT	1							
8	1	26366-060002	NUT, M6	2							
9	1	160510-13200	GASKET, MUFFLER	1							
10	1	26366-060002	NUT, M6	2							
10-1	1	114250-12300	NUT	2							N
(A=EXXXXX)											
11	1	160490-13580	MUFFLER ASSY	1							
13	2	160490-13570	COVER	1							
14	2	22859-500080	SCREW, 5X 8	3							

Remarks  
(REMARKS)"EFFECTIVE MACHINE NO." OF  
ENGINE IS INDICATED ON THE  
ENGINE LABEL WHICH IS SHOWN  
IN FIG.9.

Fig.5. CRANKSHAFT,PISTON & CAMSHAFT

(A)=GA110E-SCK

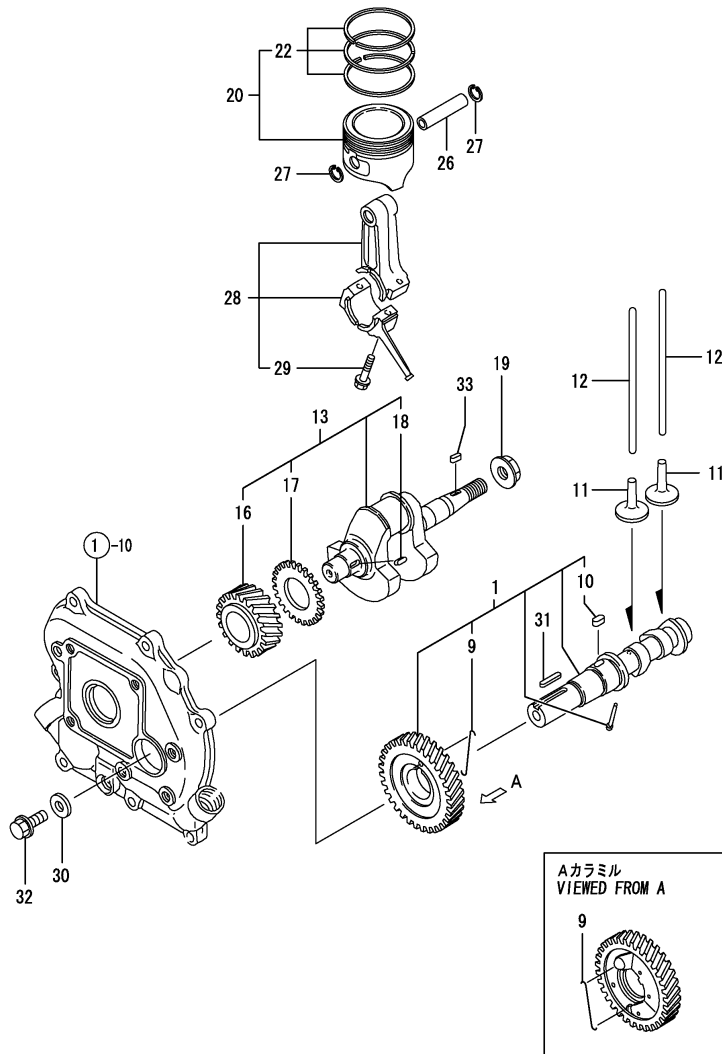
(B)=

(C)=

(D)=

(E)=

(F)=

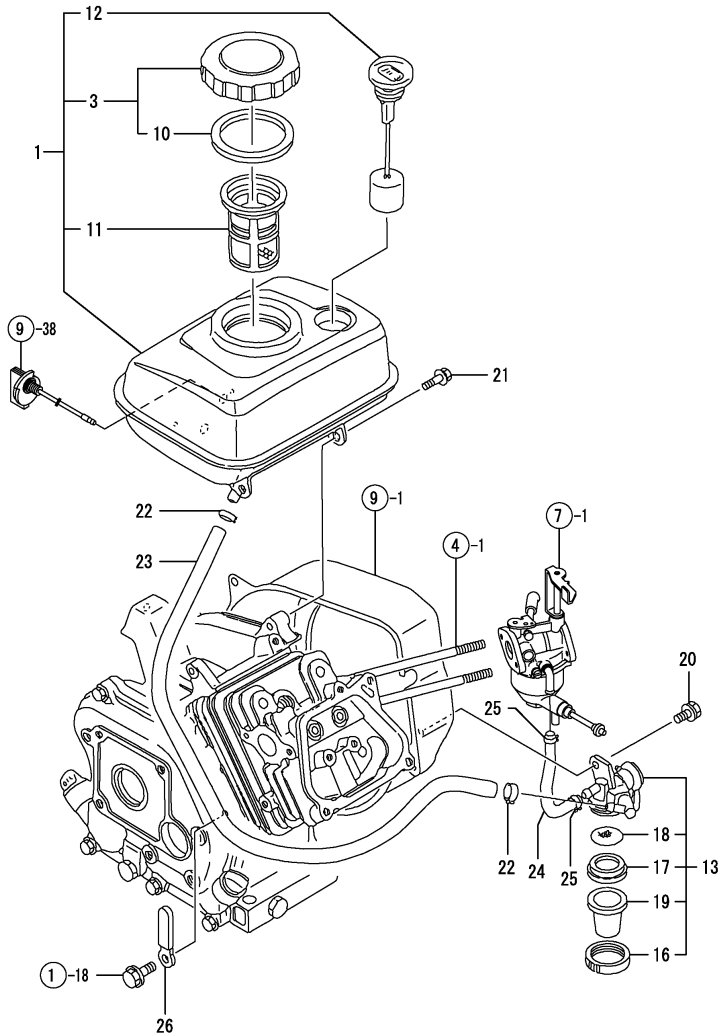


No.	Lev.	Parts No.	Description	Q'ty						I	R
				(A)	(B)	(C)	(D)	(E)	(F)		
1	1	160498-14050	CAMSHAFT ASSY	1							
9	2	160611-14560	SPRING,DECOMPRESSION	1							
10	2	114250-21290	KEY, 4X7	1							
11	1	160490-14200	TAPPET	2							
12	1	160490-14400	ROD, PUSH	2							
13	1	760498-21700	CRANKSHAFT ASSY	1							
16	2	160530-21200	GEAR, CRANKSHAFT	1							
17	2	160590-21210	GEAR, IDLE	1							
18	2	160610-21290	KEY, 4X10	1							
19	1	26376-120002	NUT, M12	1							
20	1	160498-22010	PISTON ASSY	1							
22	2	760498-22500	RING SET, PISTON	1							
26	1	160490-22300	PIN, PISTON	1							
27	1	22252-000120	RING, 12	2							
28	1	160490-23030	ROD ASSY, CONNECTING	1							
29	2	26106-060302	BOLT, M6X 30 PLATED	2							
30	1	160510-14550	WASHER	1							
31	1	160810-21290	KEY, 4X24	1							
32	1	26106-060162	BOLT, M6X 16 PLATED	1							
33	1	160610-21290	KEY, 4X10	1							W
(A)=EXXX)											

Remarks  
 (REMARKS)"EFFECTIVE MACHINE NO." OF  
 ENGINE IS INDICATED ON THE  
 ENGINE LABEL WHICH IS SHOWN  
 IN FIG.9.



Fig.6. FUEL TANK & FUEL LINE



(A)=GA110E-SCK  
(B)=  
(C)=

(D)=  
(E)=  
(F)=

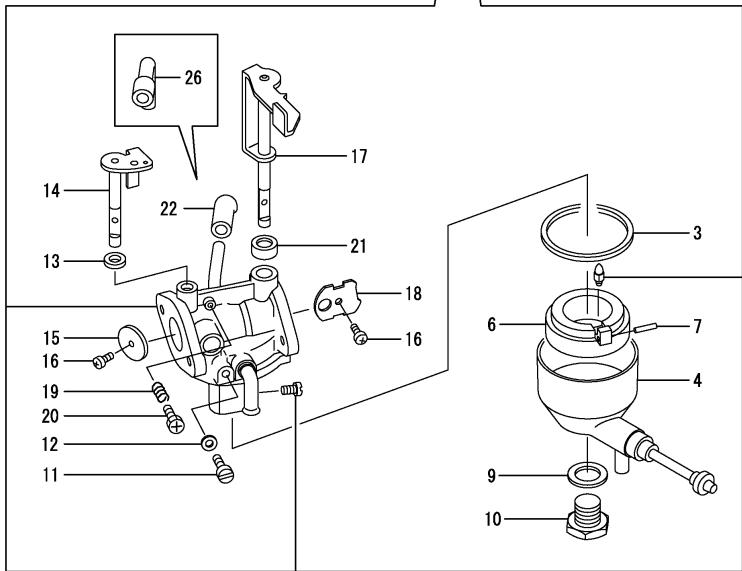
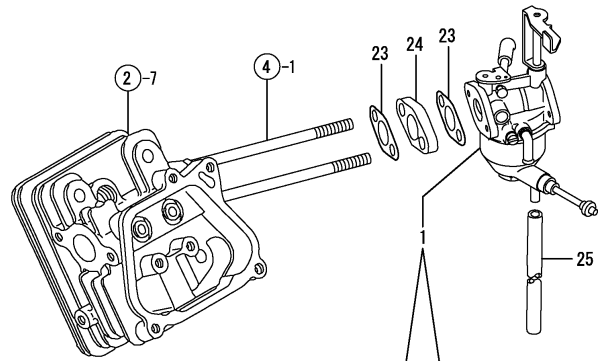
No.	Lev.	Parts No.	Description	Qty						I	R
				(A)	(B)	(C)	(D)	(E)	(F)		
1	1	760490-55700-1	TANK ASSY, FUEL	1							
3	2	160710-55061	CAP ASSY	1							
10	3	160393-55050	GASKET	1							
11	2	160610-55100	FILTER, FUEL	1							
12	2	160708-55150	GAUGE, FUEL	1							
13	1	160692-55300	COCK ASSY, FUEL	1							
16	2	160710-55360	RING	1							
17	2	160710-55370	GASKET	1							
18	2	160710-55382	FILTER	1							
19	2	160710-55390	CUP, FUEL COCK L37	1							
20	1	26106-060102	BOLT, M6X 10 PLATED	1							
21	1	26476-060142	SCREW, TAPPING M6X14	3							
22	1	106990-44660	CLIP, HOSE 12.5	2							
23	1	160490-59351	HOSE, FUEL A-340	1							
24	1	160490-59361	HOSE, FUEL B-145	1							
25	1	124060-77680	CLIP, HOSE 10	2							
25-1	1	119520-03990	CLIP, HOSE 10.5	2							R
(A=E010781)											
26	1	160260-78700	CLAMP	1							

Remarks  
(REMARKS)"EFFECTIVE MACHINE NO." OF  
ENGINE IS INDICATED ON THE  
ENGINE LABEL WHICH IS SHOWN  
IN FIG.9.

# Fig.7. CARBURETOR

(A)=GA110E-SCK  
(B)=  
(C)=

(D)=  
(E)=  
(F)=



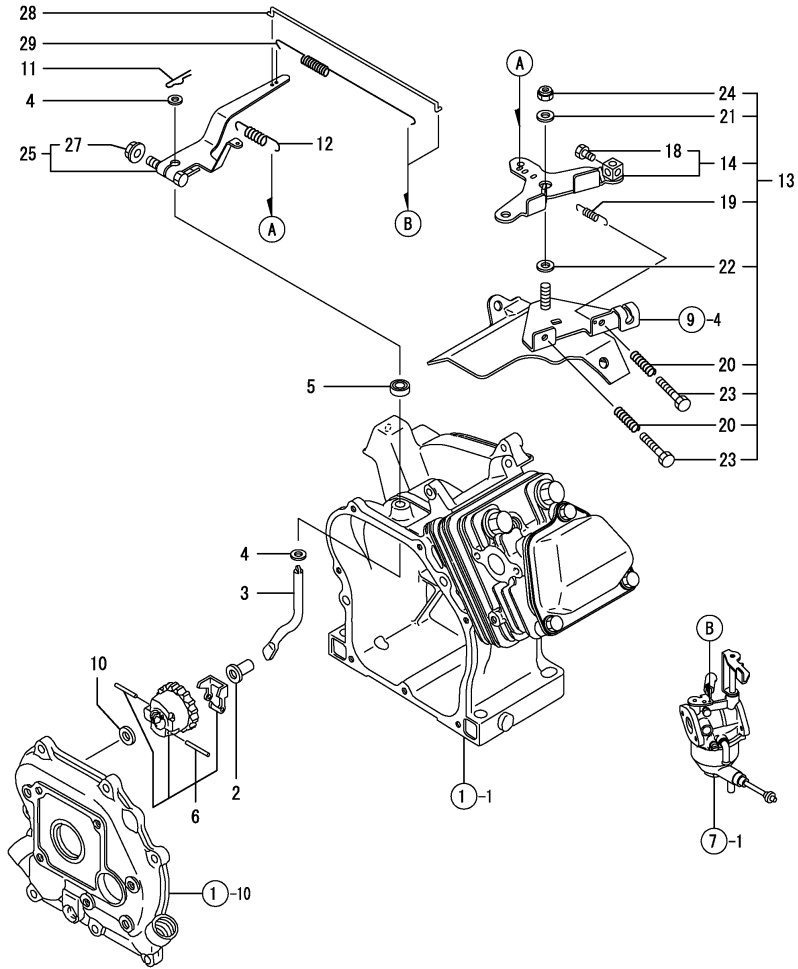
No.	Lev.	Parts No.	Description	Q'ty						I	R
				(A)	(B)	(C)	(D)	(E)	(F)		
1	1	160498-56071	CARBURETOR ASSY	1							
3	2	160493-56610	GASKET	1							
4	2	160498-56840	CHAMBER, FLORT	1							
6	2	160493-56620	FLOAT ASSY	1							
7	2	160493-56630	PIN, FLOAT	1							
9	2	160493-56730	GASKET	1							
10	2	160493-56740	PLUG	1							
11	2	160493-56752	PLUG	1							
12	2	160493-56790	GASKET	1							
13	2	160493-56850	FILTER, AIR	1							
14	2	160498-56640	SHAFT, THROTTLE	1							
15	2	160498-56540	VALVE, THROTTLE	1							
16	2	160493-56550	SCREW	2							
17	2	160493-56650	SHAFT, CHOKE	1							
18	2	160493-56530	VALVE, CHOKE	1							
19	2	160493-56710	SPRING	1							
20	2	160493-56700	SCREW, ADJUSTING	1							
21	2	160493-56800	CAP	1							
22	2	160493-56820	HOSE	1							Z
(A=E013285)											
23	1	160667-56151	GASKET, CARBURETOR	2							
24	1	160667-56160	SPACER, CARBURETOR	1							
25	1	160498-55910	PIPE, VINYL	1							
26	1	160490-56900	PIPE	1							W
(A=E013285)											

Remarks  
(REMARKS)"EFFECTIVE MACHINE NO." OF  
ENGINE IS INDICATED ON THE  
ENGINE LABEL WHICH IS SHOWN  
IN FIG.9.

Fig.8. GOVERNOR & CONTROL DEVICE

(A)=GA110E-SCK  
(B)=  
(C)=

(D)=  
(E)=  
(F)=



No.	Lev.	Parts No.	Description	Q'ty						I	R
				(A)	(B)	(C)	(D)	(E)	(F)		
2	1	160690-61301	SPINDLE	1							
3	1	160690-61311	SHAFT	1							
4	1	160690-61450	WASHER	2							
4-1	1	160690-61450	WASHER	1							K
(A=EXXX)											
5	1	114770-61600	SEAL, OIL	1							
6	1	160690-61600	GEAR ASSY, GOVERNOR	1							
10	1	160120-76940	WASHER	1							
11	1	22372-080000	PIN, SNAP 8	1							
12	1	160490-66020	SPRING, GOVERNOR	1							
13	1	160492-66100	CONTROLLER ASSY	1							
14	2	160692-66051	LEVER ASSY, CONTROL	1							
18	3	26117-040088	BOLT M 4X 8 PLATED	1							
19	2	160664-66220	SPRING, RETURN	1							
20	2	160520-66291	SPRING	2							
21	2	160670-66350	COLLAR	1							
22	2	160120-76940	WASHER	1							
23	2	26117-040257	BOLT, M4X 25 PLATED	2							
24	2	26347-060002	NUT, M6	1							
25	1	160490-66190	LEVER ASSY, GOVERNOR	1							
27	2	26366-060002	NUT, M6	1							
28	1	160490-66200	LINK, THROTTLE	1							
29	1	160490-66211	SPRING, TENSION	1							
29-1	1	160798-66210	SPRING, TENSION	1							N
(A=E008212)											

Remarks  
(REMARKS)"EFFECTIVE MACHINE NO." OF  
ENGINE IS INDICATED ON THE  
ENGINE LABEL WHICH IS SHOWN  
IN FIG.9.

Fig.9. FLYWHEEL MAG.& STARTING DEVICE

(A)=GA110E-SCK

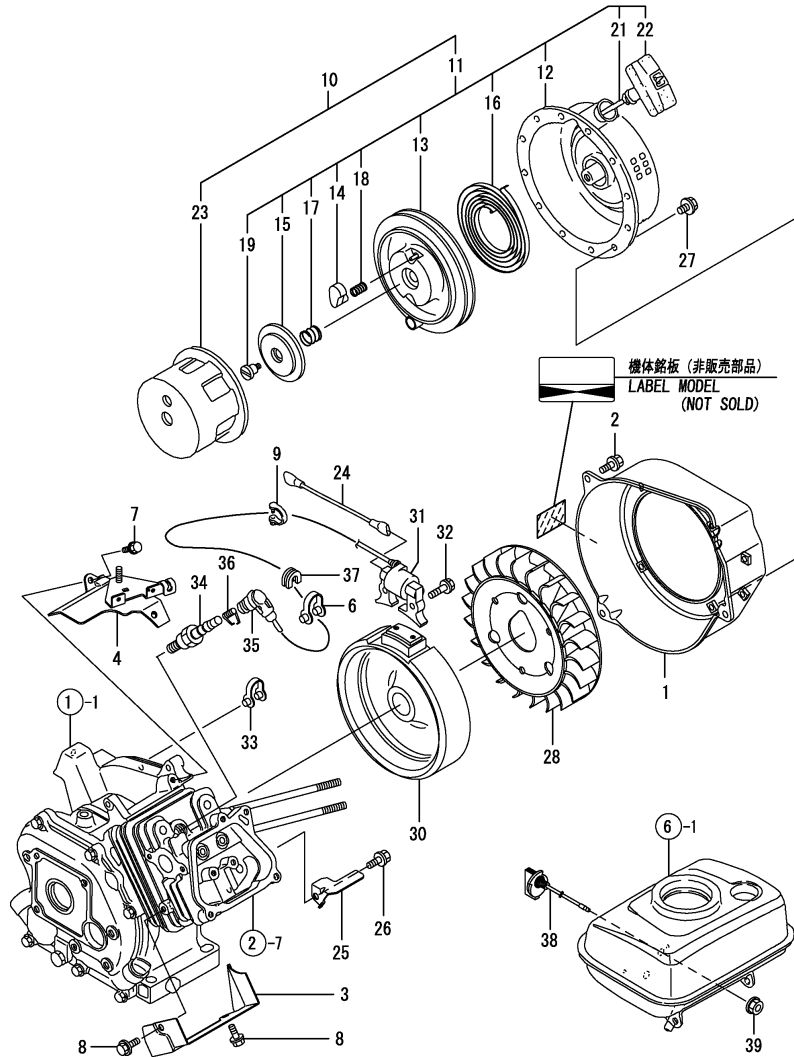
(B)=

(C)=

(D)=

(E)=

(F)=



No.	Lev.	Parts No.	Description	Q'ty						I	R
				(A)	(B)	(C)	(D)	(E)	(F)		
1	1	160490-45140	CASE, COOLING FAN	1							
2	1	26476-060142	SCREW, TAPPING M6X14	3							
3	1	160490-45230	COVER	1							
4	1	160490-45220	COVER ASSY	1							
6	1	29610-000950	CLAMP, SPEED 095	1							
7	1	26476-060142	SCREW, TAPPING M6X14	2							
8	1	26476-060142	SCREW, TAPPING M6X14	2							
9	1	29610-001400	CLAMP, SPEED 140	1							
10	1	160490-76060	STARTER ASSY, RECOIL	1							
11	2	160490-76270	STARTER ASSY, RECOIL	1							
12	3	160490-76620	CASE ASSY, STARTER	1							
13	3	160490-76511	REEL	1							
14	3	160690-76801	RATCHET	2							
15	3	160690-76531	GUIDE, RATCHET	1							
16	3	160690-76540	SPRING, SPIRAL	1							
17	3	160690-76561	SPRING, FRICTION	1							
18	3	160690-76570	SPRING, RETURN	2							
19	3	160698-76580	SCREW	1							
21	3	160490-76580	ROPE, STARTER	1							
22	3	160490-76600	KNOB, STARTER	1							
23	2	160490-76591	PULLEY, STARTER	1							
24	1	160490-78230	WIRE	1							
25	1	160490-45240	GUIDE	1							
26	1	26476-060142	SCREW, TAPPING M6X14	1							
27	1	26106-060082	BOLT, M6X 8 PLATED	4							
28	1	160490-45010	CASE, COOLING FAN	1							
30	1	160490-78540	ROTOR	1							
31	1	160490-78550	COIL, IGNITION	1							
32	1	26476-060302	SCREW, TAPPING M6X30	2							
33	1	29610-000650	CLAMP, SPEED 065	2							
34	1	160793-78010	PLUG, SPARK	1							
35	1	160700-78040	CAP, PLUG	1							
36	1	160700-78050	TERMINAL, PLUG	1							
37	1	160700-78720	GROMMET	1							
38	1	160611-77250	SWITCH, STOP	1							
39	1	26366-080002	NUT, M8	1							

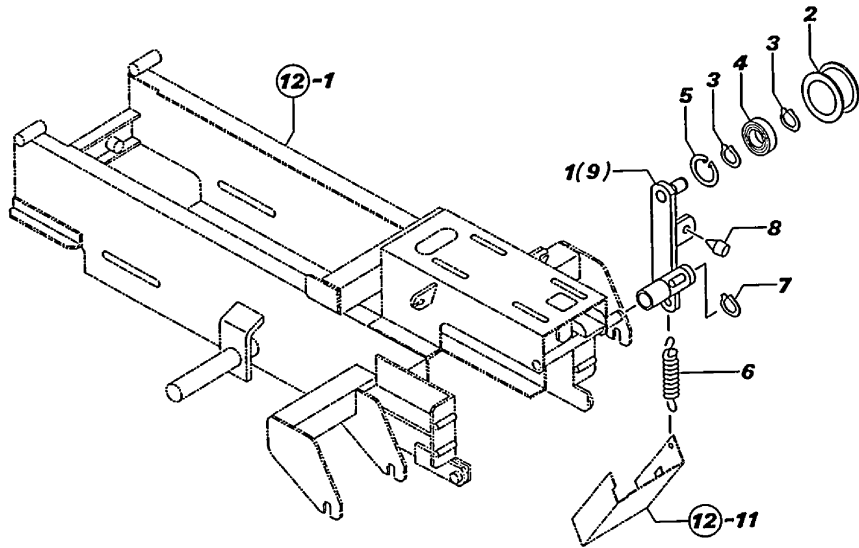
Remarks  
 (REMARKS)"EFFECTIVE MACHINE NO." OF  
 ENGINE IS INDICATED ON THE  
 ENGINE LABEL WHICH IS SHOWN  
 IN FIG.9.

Fig.10. TENSION ARM

(A)=MCG900  
 (B)=MCG900D  
 (C)=MCG900D-S

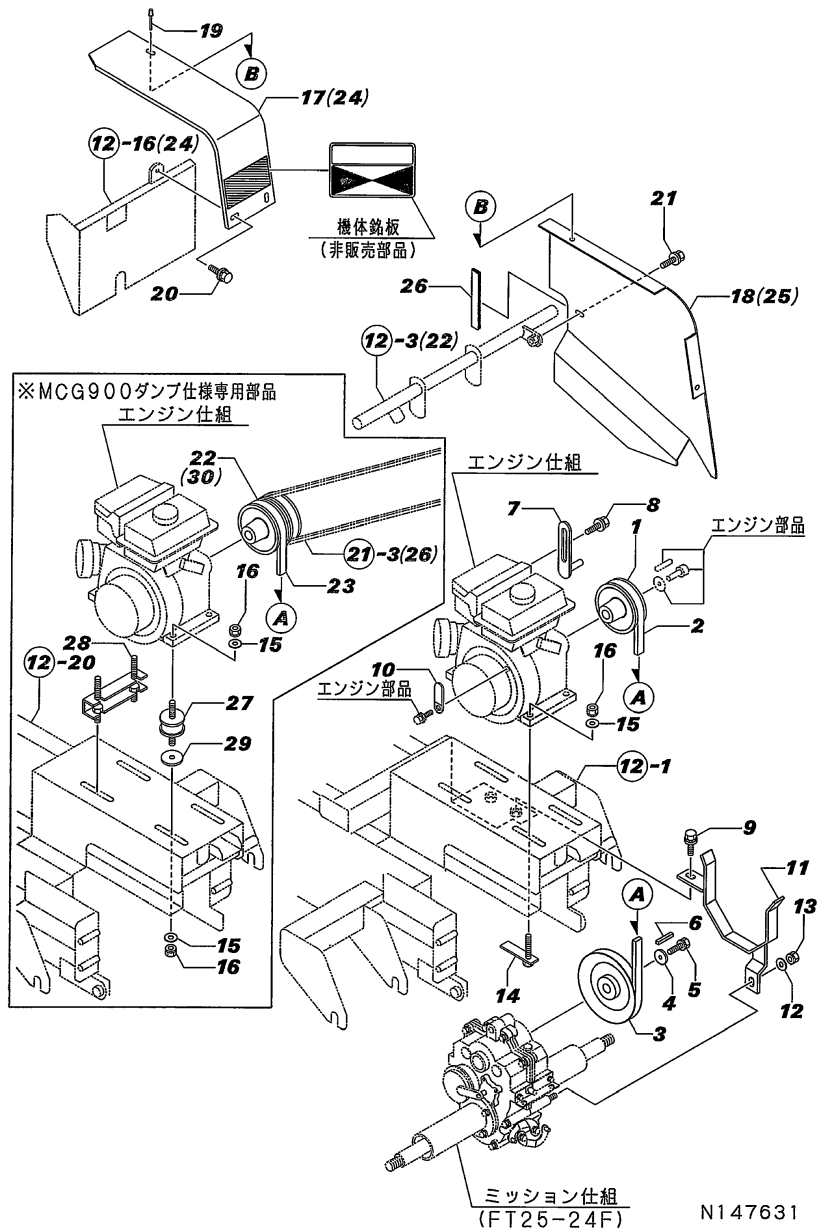
(D)=MCG900D-BN  
 (E)=MCG900-2  
 (F)=

No.	Lev.	Parts No.	Description	Qty						I	R
				(A)	(B)	(C)	(D)	(E)	(F)		
1	1	1N3503-22000	TENSION ARM	1					1		
2	1	1N1430-22070	ROLLER,TENSION	1	1	1	1	1	1		
3	1	22242-000150	RING, 15	2	2	2	2	2	2		
4	1	24104-062024	BEARING, BALL 6202UU	1	1	1	1	1	1		
5	1	22252-000350	RING, 35	1	1	1	1	1	1		
6	1	1N1190-45000	SPRING 11X72.5,TENS.	1	1	1	1	1	1		
7	1	22242-000160	RING, 16	1	1	1	1	1	1		
8	1	1N1101-44040	RUBBER,STOPPER	1	1	1	1	1	1		
9	1	1N3503-22030	TENSION ARM		1	1	1				



N147630

Fig.11. PULLEY



(A)=MCG900  
(B)=MCG900D  
(C)=MCG900D-S

(D)=MCG900D-BN  
(E)=MCG900-2  
(F)=

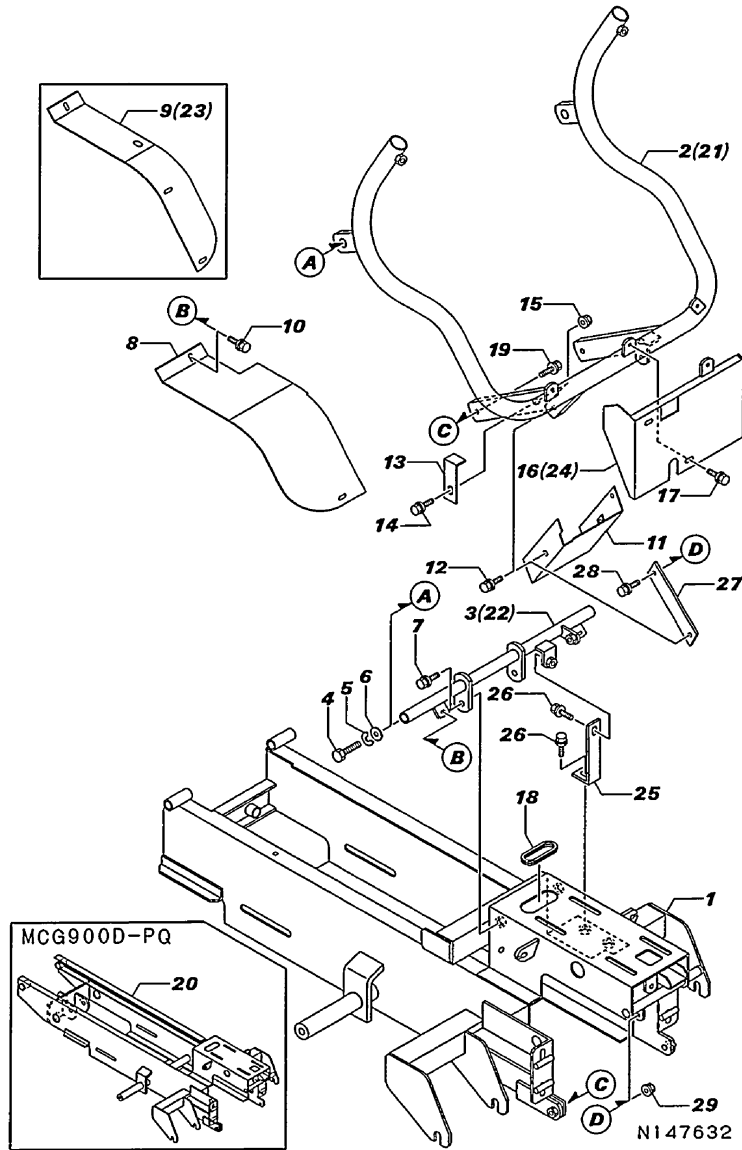
No.	Lev.	Parts No.	Description	Q'ty						I	R
				(A)	(B)	(C)	(D)	(E)	(F)		
1	1	1N3503-21000	PULLEY,ENGINE	1				1			
2	1	25123-002601	V-BELT, B26H	1				1			
3	1	1N3560-21010	PULLEY,TRANSMISSION	1	1	1	1	1			
4	1	1N1240-21040	WASHER	1	1	1	1	1	1		
5	1	26016-060164	BOLT 6X16 W/L.W.	1	1	1	1	1	1		
6	1	22550-050201	KEY, 5X 20	1	1	1	1	1	1		
7	1	1N1291-22020	GUARD 40,BELT	2	2	2	2	2	2		
8	1	26018-080164	BOLT M 8X 16	2	2	2	2	2	2		
9	1	26018-080164	BOLT M 8X 16	1	1	1	1	1	1		
10	1	1E6020-83890	CLIP	1	1	1	1	1	1		
11	1	1N3503-22050		1	1	1	1	1	1		
12	1	22137-080000	WASHER, 8	1	1	1	1	1	1		
13	1	26051-080002	NUT, M8	1	1	1	1	1	1		
14	1	1N3503-16000	BOLT M8X45	4					4		
15	1	22137-080000	WASHER, 8	4	8	8	8	8	4		
16	1	26051-080002	NUT, M8	4	8	8	8	8	4		
17	1	1N3503-58031	LID, PULLEY COVER	1					1		
18	1	1N3503-58070	COVER B,PULLEY	1					1		
19	1	1N3503-58120	RIVET	2					2		
20	1	1N3513-69050	BOLT 6X12	1	1	1	1	1	1		
21	1	1N1291-58080	BOLT 6X16 W/P&SW.	1	3	3	3	3	1		
22	1	1N3503-21010	PULLEY,ENGINE					1			
23	1	25123-002801	V-BELT, B28H		1	1	1	1			
24	1	1N3503-58220	COVER, PULLEY		1	1	1	1			
25	1	1N3503-58190			1	1	1	1			
26	1	1N3520-58190	RUBBER,EDGING		1	1	1	1			
27	1	1N3580-16000	MOUNT		2	2	2	2			
28	1	1N3503-16020			1	1	1	1			
29	1	1N1090-21010	WASHER 9X35X3.2		2	2	2	2			
30	1	1N3503-21030	PULLEY,ENGINE		1			1			

N147631

Fig.12. BODY FRAME

(A)=MCG900  
(B)=MCG900D  
(C)=MCG900D-S

(D)=MCG900D-BN  
(E)=MCG900-2  
(F)=

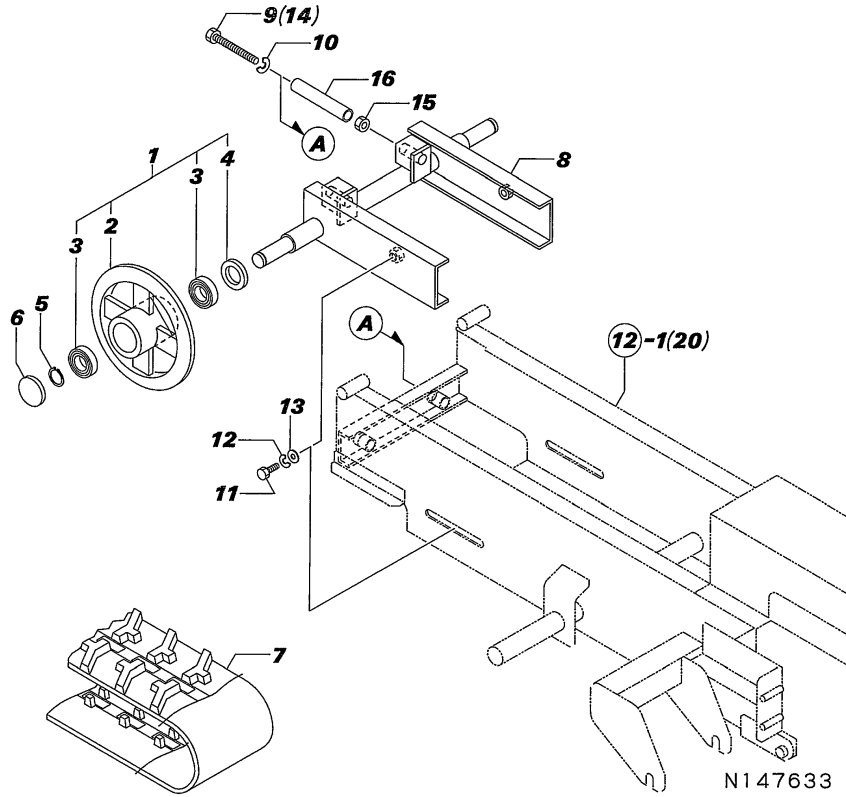


No.	Lev.	Parts No.	Description	Q'ty						I	R
				(A)	(B)	(C)	(D)	(E)	(F)		
1	1	1N3503-31000	FRAME,BODY	1					1		
2	1	1N3503-54050	PIPE,STEP	1					1		
3	1	1N3503-54071	SHAFT,STEP	1					1		
4	1	26117-140454	BOLT, M14X 45 PLATED	2	2	2	2	2			
5	1	22217-140000	WASHER, SPRING 14	2	2	2	2	2			
6	1	22137-140000	WASHER, 14	2	2	2	2	2			
7	1	26018-100254	BOLT M10X 25	2	2	2	2	2			
8	1	1N3503-58021	FENDER (L)	1	1	1	1	1			
9	1	1N3503-58040	FENDER R	1					1		
10	1	1N3513-69050	BOLT 6X12	5	5	5	5	5			
11	1	1N3503-58000	GUARD,UNDER	1	1	1	1	1			
12	1	1N1291-58080	BOLT 6X16 W/P&SW.	2	2	2	2	2			
13	1	1N3503-54001	STEP BRACKET	1	1	1	1	1			
14	1	26018-080164	BOLT M 8X 16	1	1	1	1	1			
15	1	26367-080002	NUT, M8	1	1	1	1	1			
16	1	1N3503-58051	FENDER	1					1		
17	1	1N3513-69050	BOLT 6X12	2	2	2	2	2			
18	1	1N1185-53000	GROMMET 70	1	1	1	1	1			
19	1	26018-100254	BOLT M10X 25	2	2	2	2	2			
20	1	1N3503-31290	FRAME D,BODY		1	1	1				
21	1	1N3503-54080	PIPE,STEP		1	1	1				
22	1	1N3503-54090	SHAFT,STEP		1	1	1				
23	1	1N3503-58160	FENDER (R)		1	1	1				
24	1	1N3503-58170	FENDER		1	1	1				
25	1	1N3503-54110	STAY		1	1	1				
26	1	26018-080204	BOLT M 8X 20		2	2	2				
27	1	1N3503-31150	STAY		1	1	1				
28	1	26018-080204	BOLT M 8X 20		1	1	1				
29	1	26367-080002	NUT, M8		1	1	1				

Fig.13. IDLER

(A)=MCG900  
(B)=MCG900D  
(C)=MCG900D-S

(D)=MCG900D-BN  
(E)=MCG900-2  
(F)=



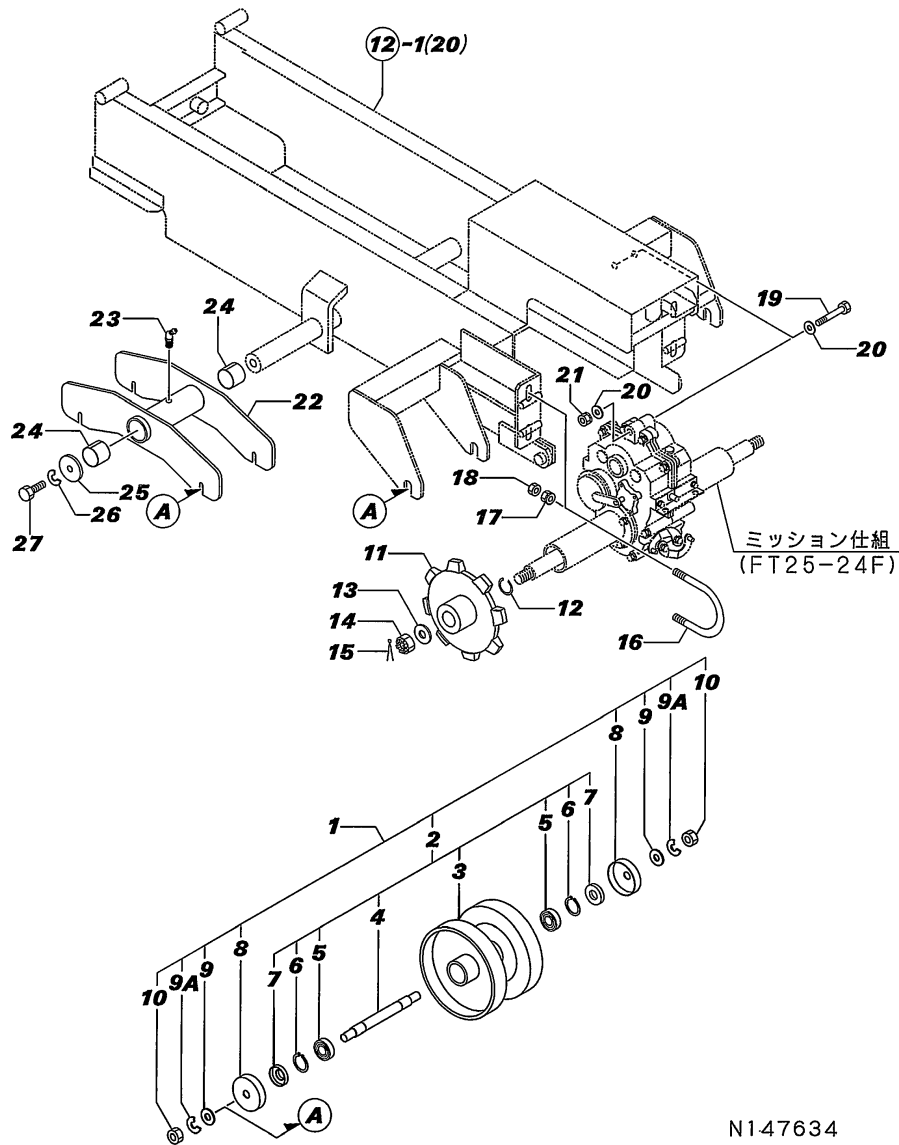
No.	Lev.	Parts No.	Description	Q'ty						I	R
				(A)	(B)	(C)	(D)	(E)	(F)		
1	1	7N3503-35000	FLOAT RING ASSY.	2	2	2	2	2			
2	2	1N3503-35070	WHEEL, IDLE	2	2	2	2	2			
3	2	24101-060054	BEARING, BALL 6005	4	4	4	4	4			
4	2	24421-304707	SEAL, OIL TC304707	2	2	2	2	2			
5	1	22242-000250	RING, 25	2	2	2	2	2			
6	1	1N3506-35020	SEAL CAP	2	2	2	2	2			
7	1	1N3503-37000	CRAWLAR 180X60X37	2	2	2	2	2			
8	1	1N3503-35000	BRACKET, IDLE WHEEL	1	1	1	1	1			
9	1	26117-141504	BOLT, M14X150 PLATED	2					2		
10	1	22217-140000	WASHER, SPRING 14	2	2	2	2	2			
11	1	26117-120254	BOLT M12X 25 PLATED	2	2	2	2	2			
12	1	22217-120000	WASHER, SPRING 12	2	2	2	2	2			
13	1	22137-120000	WASHER, 12	2	2	2	2	2			
14	1	26117-143102	BOLT, M14X310 PLATED		2	2	2	2			
15	1	26757-140002	NUT, LOCK M14	2	2	2	2	2			
16	1	1N3503-35080	COLLAR, 15X20X115		2	2	2				



Fig.14. TRACK ROLLER

(A)=MCG900  
(B)=MCG900D  
(C)=MCG900D-S

(D)=MCG900D-BN  
(E)=MCG900-2  
(F)=



N147634

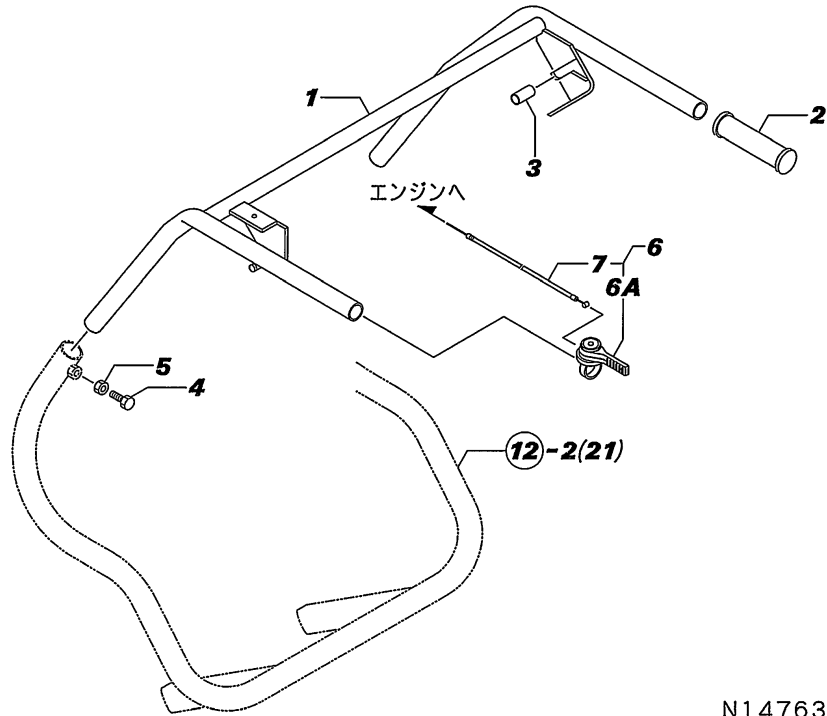
No.	Lev.	Parts No.	Description	Q'ty						I	R
				(A)	(B)	(C)	(D)	(E)	(F)		
1	1	7N3501-36010	LWR.TRANK ROLLER SET	6	6	6	6	6			
2	2	7N3501-36000	LWR.TRANK ROLLER ASY	6	6	6	6	6			
3	3	1N3501-36010	ROLLER,LOWER TRACK	6	6	6	6	6			
4	3	1N3501-35020	SHAFT	6	6	6	6	6			
5	3	24101-060024	BEARING, BALL 6002	12	12	12	12	12			
6	3	22242-000150	RING, 15	12	12	12	12	12			
7	3	24421-153206	SEAL, OIL TC153206	12	12	12	12	12			
8	2	1N1091-36000	COVER,OIL SEAL	12	12	12	12	12			
9	2	22137-120000	WASHER, 12	12	12	12	12	12			
9A	2	22217-120000	WASHER, SPRING 12	12	12	12	12	12			
10	2	26717-120002	NUT, M12	12	12	12	12	12			
11	1	1N3503-35060	SPROCKET	2	2	2	2	2			
12	1	1N3504-53000	CIRCLIP	2	2	2	2	2			
13	1	22137-160000	WASHER, 16	2	2	2	2	2			
14	1	26817-160002	NUT, CASTLE M16	2	2	2	2	2			
15	1	22417-400400	PIN, COTTER 4.0X40	2	2	2	2	2			
16	1	1N3501-35030	U-BOLT	2	2	2	2	2			
17	1	26052-100002	NUT, M10	4	4	4	4	4			
18	1	26757-100002	NUT, LOCK M10	4	4	4	4	4			
19	1	26117-100702	BOLT M10X 70 PLATED	1	1	1	1	1			
20	1	22137-100000	WASHER, 10	2	2	2	2	2			
21	1	26757-100002	NUT, LOCK M10	1	1	1	1	1			
22	1	1N3503-36000	ICORADER	2	2	2	2	2			
23	1	1N3505-33040	NIPPLE BMT6X1,GREASE	2	2	2	2	2			
24	1	1E1107-62040	LINER	4	4	4	4	4			
25	1	1E1102-71190	WASHER	2	2	2	2	2			
26	1	22217-120000	WASHER, SPRING 12	2	2	2	2	2			
27	1	26117-120254	BOLT M12X 25 PLATED	2	2	2	2	2			

Fig.15. HANDLE

(A)=MCG900  
(B)=MCG900D  
(C)=MCG900D-S

(D)=MCG900D-BN  
(E)=MCG900-2  
(F)=

No.	Lev.	Parts No.	Description	Qty						I	R	
				(A)	(B)	(C)	(D)	(E)	(F)			
1	1	1N3503-47000	HANDLE									
1-1	1	1N3503-47001	HANDLE (C=F012024)	1	1	1	1	1			S	
2	1	1N1313-44000	GRIP A 25.4	2	2	2	2	2				
3	1	1N3504-41110	HOSE	1	1	1	1	1				
4	1	26117-100254	BOLT, M10X 25 PLATED	2	2	2	2	2				
5	1	26757-100002	NUT, LOCK M10	2	2	2	2	2				
6	1	7N3561-51000	LEVER,ACCELE	1	1	1	1	1				
6A	2	1N3503-51010	LEVER 25,AXLE	1	1	1	1	1				
7	2	1N3561-51070	WIRE,ACCELE	1	1	1	1	1				

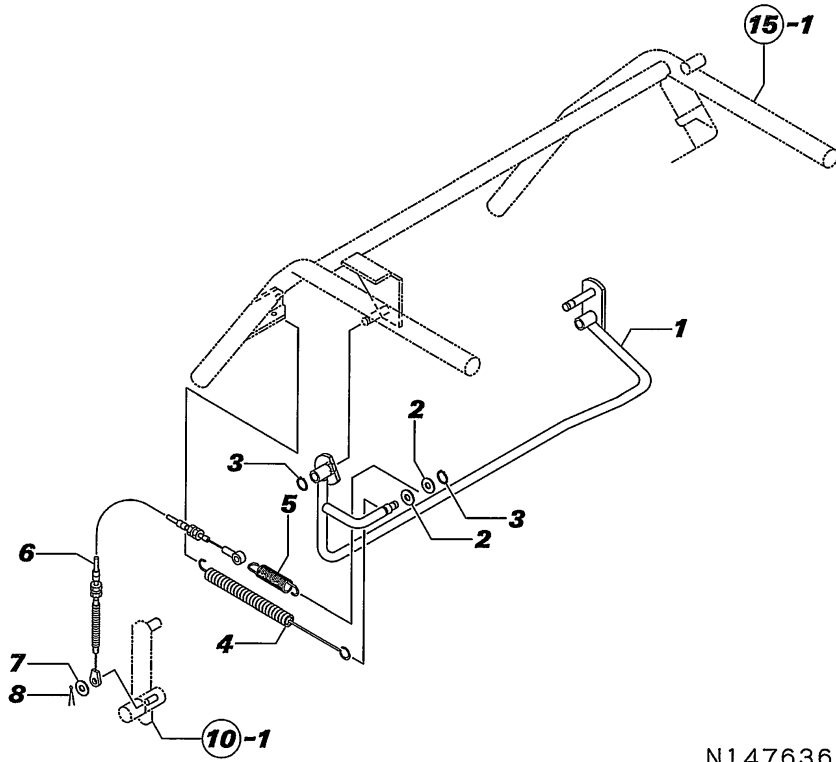


N147635

Fig.16. TRAVEL CLUTCH LEVER

(A)=MCG900  
(B)=MCG900D  
(C)=MCG900D-S

(D)=MCG900D-BN  
(E)=MCG900-2  
(F)=



N147636

No.	Lev.	Parts No.	Description	Q'ty						I	R	
				(A)	(B)	(C)	(D)	(E)	(F)			
1	1	1N3503-42000	LEVER, OPERATION									
1-1	1	1N3503-42001	LEVER, OPERATION (C=F012024)	1	1	1	1	1			S	
2	1	22137-100000	WASHER, 10	2	2	2	2	2				
3	1	22242-000100	RING, 10	2	2	2	2	2				
4	1	1N3503-53020	SPRING	1	1	1	1	1				
5	1	1N3503-53010	SPRING	1	1	1	1	1				
6	1	1N3503-51020	WIRE,CONTROL	1	1	1	1	1				
7	1	22137-080000	WASHER, 8	1	1	1	1	1				
8	1	1N3513-42160	PIN	1	1	1	1	1				

Fig.17. BRAKE LEVER

(A)=MCG900  
 (B)=MCG900D  
 (C)=MCG900D-S

(D)=MCG900D-BN  
 (E)=MCG900-2  
 (F)=

No.	Lev.	Parts No.	Description	Qty						I	R
				(A)	(B)	(C)	(D)	(E)	(F)		
1	1	1N3503-51070	WIRE,CONTROL	1	1	1	1	1			
2	1	22242-000100	RING, 10	2	2	2	2	2			
3	1	1N3503-53000	SPRING	1	1	1	1	1			
4	1	1N1210-42040	LINK,BRAKE CONNECTG	1	1	1	1	1			
5	1	22137-080000	WASHER, 8	1	1	1	1	1			
6	1	22417-250200	PIN, COTTER 2.5X20	1	1	1	1	1			
7	1	1N3503-53030	SPRING	1	1	1	1	1			

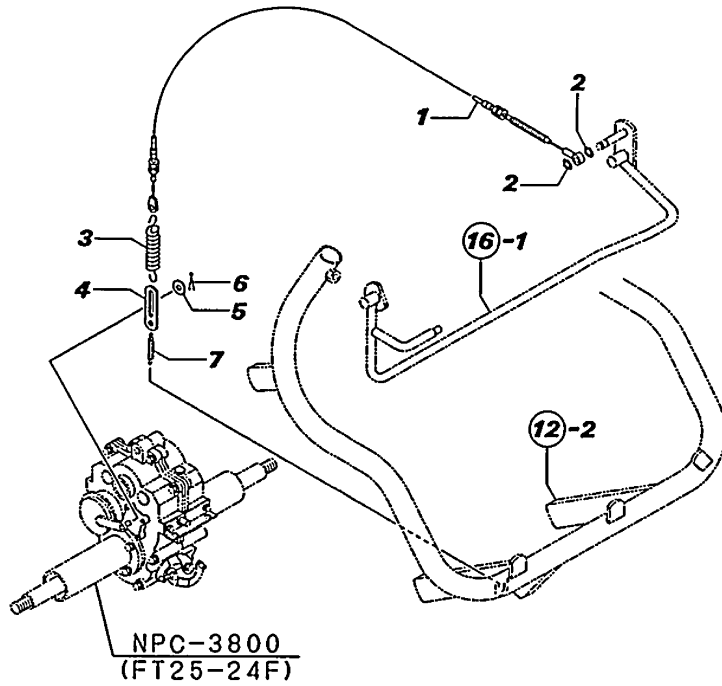


Fig.18. MAIN CHANGE LEVER

(A)=MCG900  
(B)=MCG900D  
(C)=MCG900D-S

(D)=MCG900D-BN  
(E)=MCG900-2  
(F)=

No.	Lev.	Parts No.	Description	Q'ty						I	R
				(A)	(B)	(C)	(D)	(E)	(F)		
1	1	1N3503-41000	CHANGE LEVER	1	1	1	1	1			
2	1	1N1101-44010	GRIP 10,CLUTCH	1	1	1	1	1			
3	1	22351-060030	PIN, SPRING 6.0X30	1	1	1	1	1			
4	1	22351-035030	PIN, SPRING 3.5X30	1	1	1	1	1			

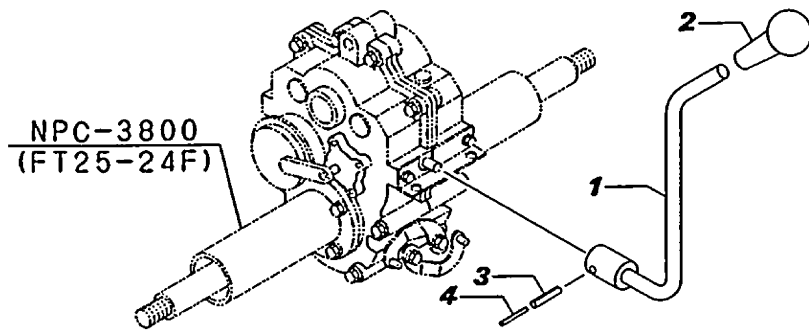


Fig.19. SIDE CLUTCH LEVER

(A)=MCG900  
 (B)=MCG900D  
 (C)=MCG900D-S

(D)=MCG900D-BN  
 (E)=MCG900-2  
 (F)=

No.	Lev.	Parts No.	Description	Qty						I	R
				(A)	(B)	(C)	(D)	(E)	(F)		
1	1	1E4490-51701	LEVER ASSY, CLUTCH L	2	2	2	2	2			
2	2	26014-060259	BOLT, M6X 25	2	2	2	2	2			
3	1	1N3503-51100	WIRE, SIDE CLUTCH	2	2	2	2	2			
4	1	22137-080000	WASHER, 8	2	2	2	2	2			
5	1	22417-250200	PIN, COTTER 2.5X20	2	2	2	2	2			

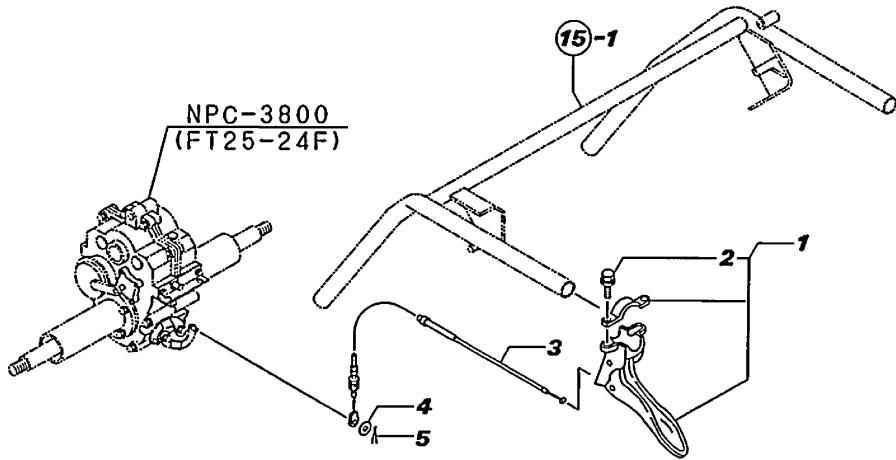
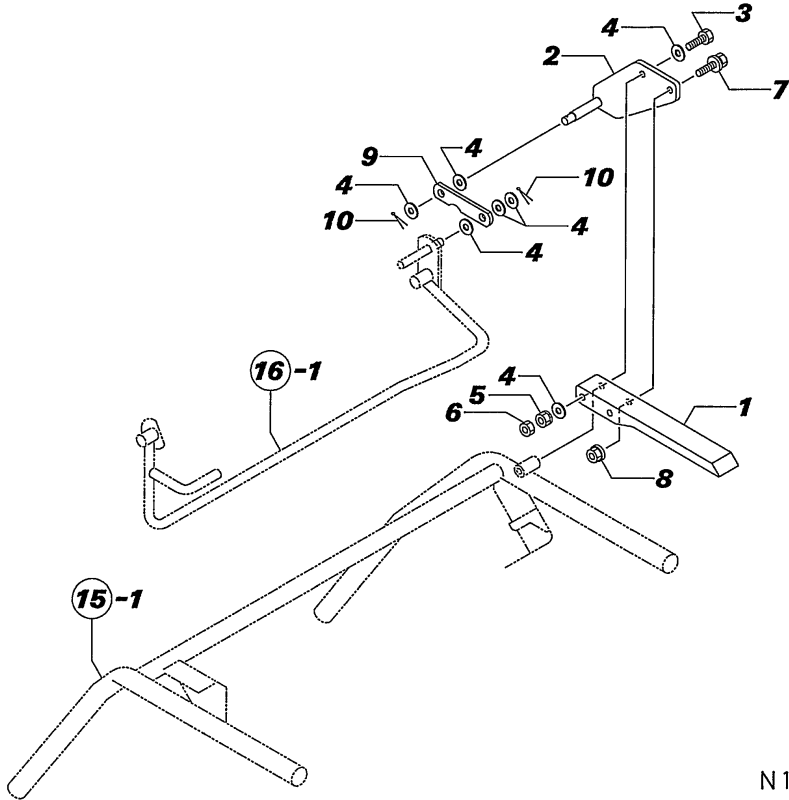


Fig.20. DEADMAN LEVER

(A)=MCG900  
 (B)=MCG900D  
 (C)=MCG900D-S

(D)=MCG900D-BN  
 (E)=MCG900-2  
 (F)=

No.	Lev.	Parts No.	Description	Q'ty						I	R
				(A)	(B)	(C)	(D)	(E)	(F)		
1	1	1N1723-31360	LEVER,DEADMAN	1	1	1	1	1			
2	1	1N3503-42040	BRACKET DEADMAN	1	1	1	1	1			
3	1	26116-080552	BOLT, M8X 55 PLATED	1	1	1	1	1			
4	1	22137-080000	WASHER, 8	7	7	7	7	7			
5	1	26347-080002	NUT, M8	1	1	1	1	1			
6	1	26757-080002	NUT, LOCK M8	1	1	1	1	1			
7	1	26018-080204	BOLT M 8X 20	1	1	1	1	1			
8	1	26367-080002	NUT, M8	1	1	1	1	1			
9	1	1N3503-42070	LEVER CONNECTING			1					
9-1	1	1N3503-42071	LEVER CONNECTING (C=F012024)	1	1	1	1	1		S	
10	1	22417-250200	PIN, COTTER 2.5X20	2	2	2	2	2			

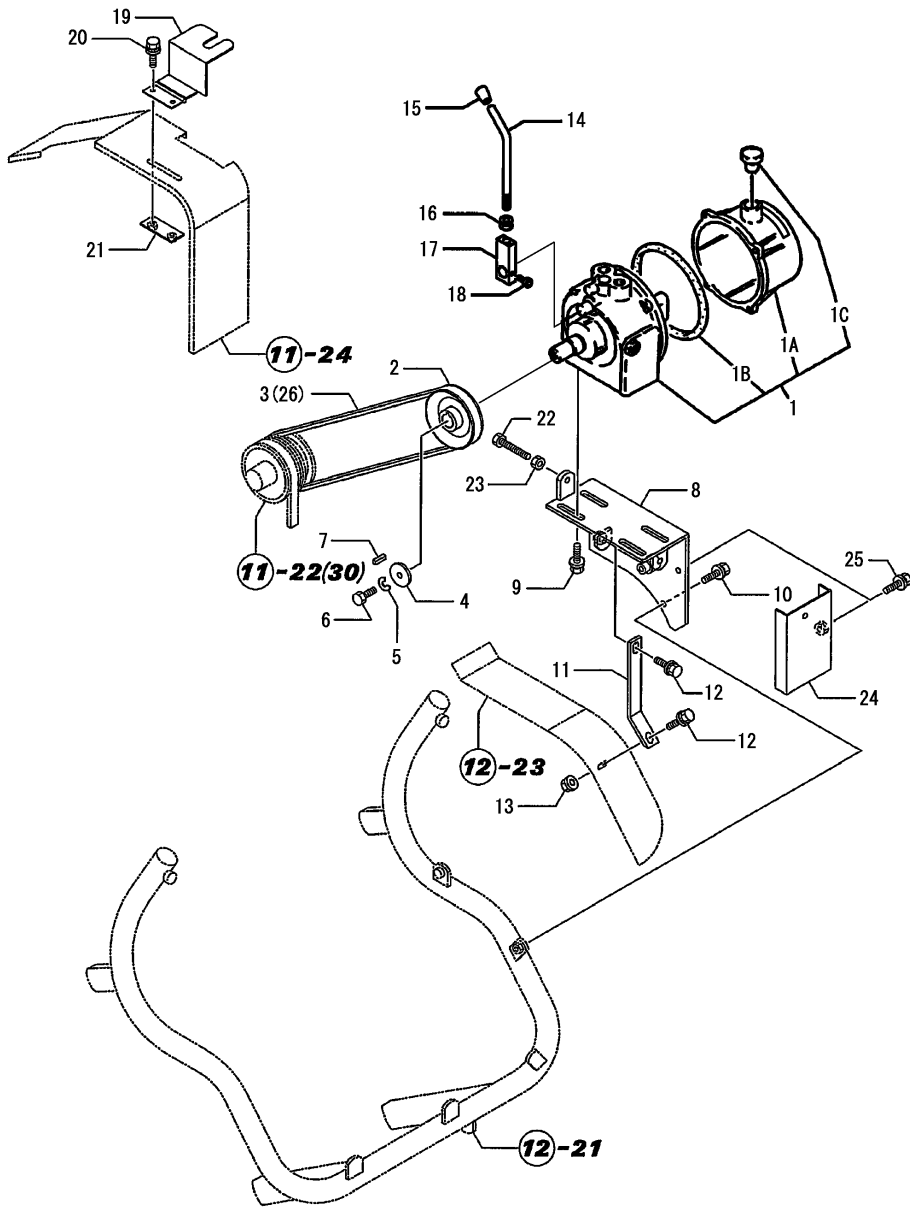


N147640

Fig.21. HYDRAULIC PUMP

(A)=MCG900  
(B)=MCG900D  
(C)=MCG900D-S

(D)=MCG900D-BN  
(E)=MCG900-2  
(F)=



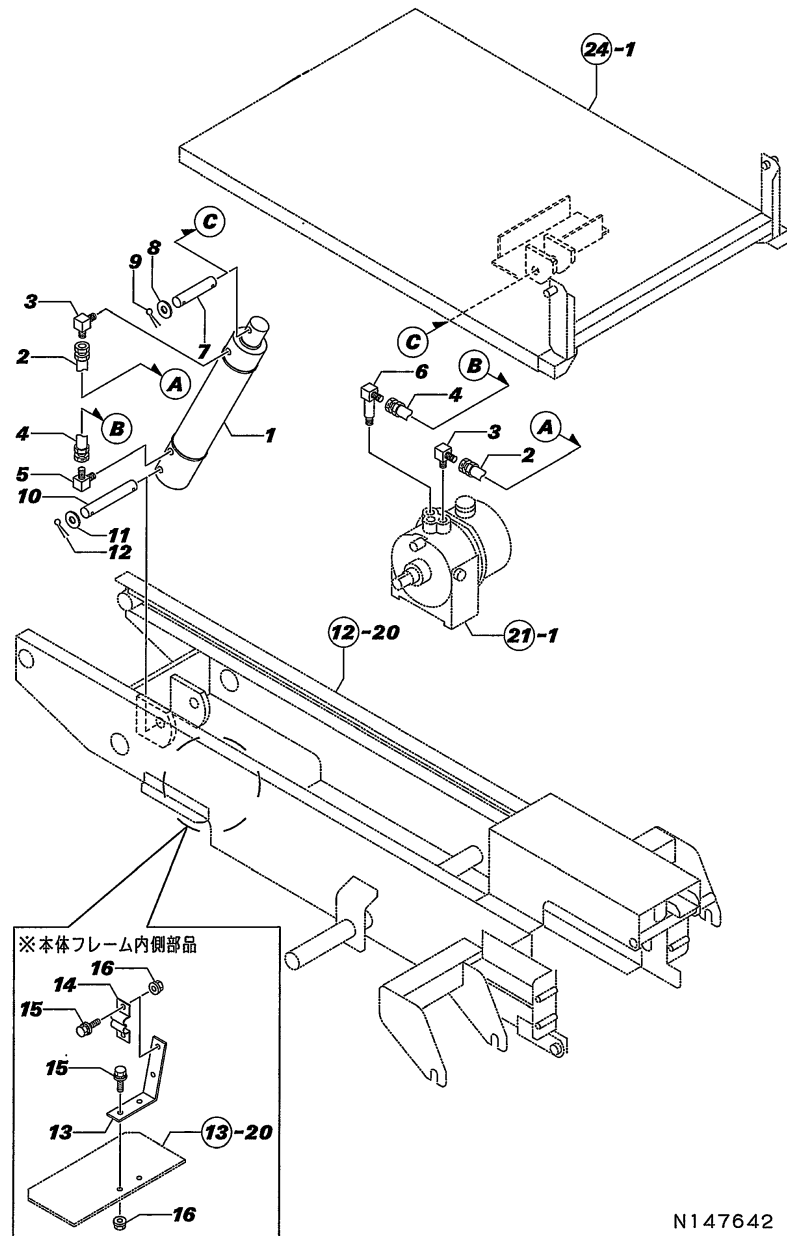
No.	Lev.	Parts No.	Description	Qty						I	R	
				(A)	(B)	(C)	(D)	(E)	(F)			
1	1	7N1277-61000	HYDRAULIC PUMP PPH1.		1	1	1					
1A	2	1N1277-61020	TANK, HYDRAULIC PUMP		1	1	1					
1B	2	24321-001200	O-RING, 1AG120.0		1	1	1					
1C	2	1N1277-61031	CAP, BREATHER		1	1	1					
2	1	1N3505-21020	PULLEY B3.0X1, PKG.		1	1	1					
3	1	25113-001900	V-BELT, B19			1						
4	1	1N1210-16060	WASHER 11X35, RUBBER		1	1	1					
5	1	22217-100000	WASHER, SPRING 10		1	1	1					
6	1	26117-100164	BOLT M10X 16 PLATED		1	1	1					
7	1	22550-050180	KEY, 5X 18		1	1	1					
8	1	1N3504-45000	PLATFORM, PACKAGE		1	1	1					
9	1	26018-080204	BOLT M 8X 20		4	4	4					
10	1	26018-080164	BOLT M 8X 16		2	2	2					
11	1	1N3503-54100	STAY		1	1	1					
12	1	26018-080204	BOLT M 8X 20		2	2	2					
13	1	26367-080002	NUT, M8		1	1	1					
14	1	1N3503-45060	LEVER, DUMP		1	1	1					
15	1	1N1216-44010	GRIP		1	1	1					
16	1	26051-100002	NUT, M10		1	1	1					
17	1	1N1386-45130	PACKAGE PARTS		1	1	1					
18	1	1N1285-61000	BOLT M5X10, HSH.		1	1	1					
19	1	1N3504-45050	LOCK, HYDRAULIC		1	1	1					
20	1	1N1291-58080	BOLT 6X16 W/P&SW.		2	2	2					
21	1	1N3504-45070	RETAINER		1	1	1					
22	1	26117-080504	BOLT M 8X 50 PLATED		1	1	1					
23	1	26757-080002	NUT, LOCK M8		1	1	1					
24	1	1N3503-45090	COVER		1	1	1					
25	1	1N1291-58080	BOLT 6X16 W/P&SW.		2	2	2					
26	1	25113-002000	V-BELT, B20		1		1					



Fig.22. HYDRAULIC CYLINDER

(A)=MCG900  
 (B)=MCG900D  
 (C)=MCG900D-S

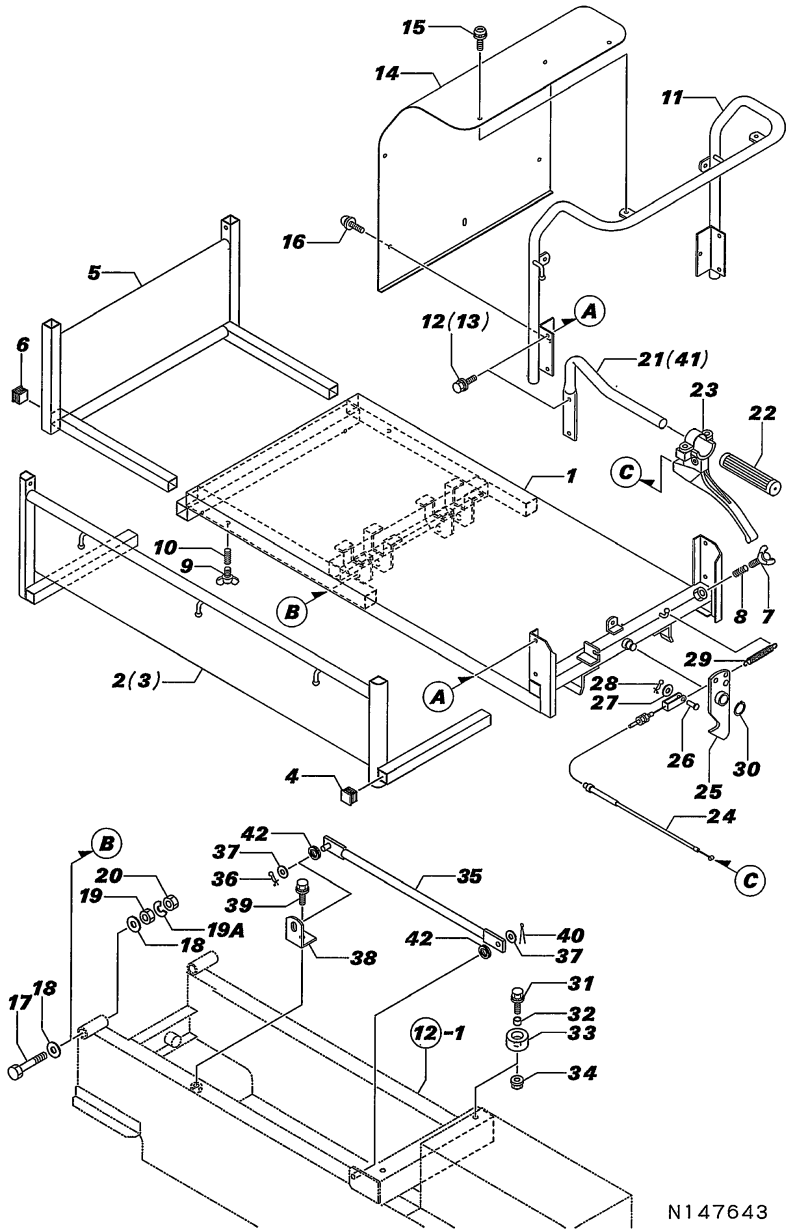
(D)=MCG900D-BN  
 (E)=MCG900-2  
 (F)=



N147642

No.	Lev.	Parts No.	Description	Q'ty						I	R
				(A)	(B)	(C)	(D)	(E)	(F)		
1	1	1N3500-61010	CYLINDER		1	1	1				
2	1	7N1700-61010	HOSE		1	1	1				
3	1	1N1090-61030	ELBOW		2	2	2				
4	1	1N1286-61110	HOSE		1	1	1				
5	1	1N1286-61130	ELBOW		1	1	1				
6	1	1N3512-61040	ELBOW, LONG		1	1	1				
7	1	1N1215-61001	PIN,CYLINDER MTG.		1	1	1				
8	1	22137-180000	WASHER, 18		2	2	2				
9	1	22417-400400	PIN, COTTER 4.0X40		2	2	2				
10	1	1N3544-61020	PIN		1	1	1				
11	1	22137-180000	WASHER, 18		2	2	2				
12	1	22417-400400	PIN, COTTER 4.0X40		2	2	2				
13	1	1N3503-61000	STAY, HOSE (C=F012066)		1	1	1				W
14	1	1N1526-61040	HOSE BAND (C=F012066)		1	1	1				W
15	1	26018-060164	BOLT M 6X 16 (C=F012066)		4	4	4				W
16	1	26367-060002	NUT, M6 (C=F012066)		4	4	4				W

Fig.23. PLATFORM CARRIER



N147643

(A)=MCG900  
(B)=MCG900D  
(C)=MCG900D-S

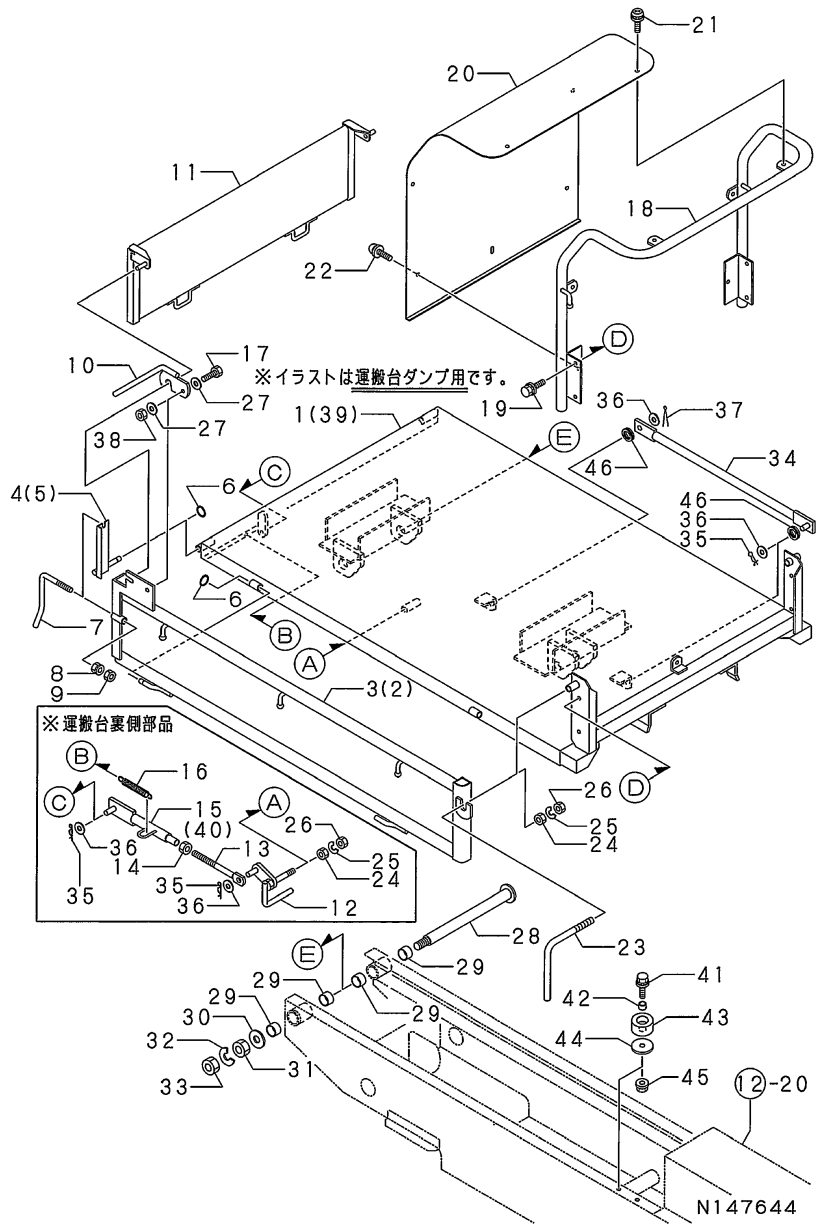
(D)=MCG900D-BN  
(E)=MCG900-2  
(F)=

No.	Lev.	Parts No.	Description	Qty						I	R
				(A)	(B)	(C)	(D)	(E)	(F)		
1	1	1N3503-64001	CARRIER							1	
2	1	1N3503-65000	SIDE PLATE(LEFT							1	
3	1	1N3503-65070	SIDE PLATE							1	
4	1	1N1520-53020	PLUG 25J,SQUARE OIL							4	
5	1	1N3503-66000	PLATE							1	
6	1	1N1520-53020	PLUG 25J,SQUARE OIL							2	
7	1	26647-100352	BOLT, WING M10X35							2	
8	1	1N1151-53020	SPRING 10.5X25,COMPR							2	
9	1	26647-100302	BOLT 10X30,WING							4	
10	1	1N1151-53020	SPRING 10.5X25,COMPR							4	
11	1	1N3503-66060	GUIDE							1	
12	1	26018-080254	BOLT M 8X 25							2	
13	1	26018-080204	BOLT M 8X 20							2	
14	1	1N3503-66100	PLATE,BACK							1	
15	1	1N3503-66220	SCREW 6X12							5	
16	1	1N3503-66230	SCREW 6X12							2	
17	1	26117-140902	BOLT, M14X 90 PLATED	2						2	
18	1	22137-140000	WASHER, 14	4						4	
19	1	26717-140002	NUT, M14	2						2	
19A	1	22217-140000	WASHER, SPRING 14	2						2	
20	1	26757-140002	NUT, LOCK M14	2						2	
21	1	1N3503-64160	LEVER, DUMP							1	
22	1	1N3503-44010	GRIP	1						1	
23	1	1N3503-51060	LEVER	1						1	
24	1	1N3503-51050	WIRE,CARRIER LOCK	1						1	
25	1	1N3503-64140	CARRIER LOCK	1						1	
26	1	1N1215-51000	PIN 6X16,RIVET	1						1	
27	1	22137-060000	WASHER, 6	1						1	
28	1	22360-060000	PIN, SNAP 6	1						1	
29	1	1N1190-45000	SPRING 11X72.5,TENS.	1						1	
30	1	22242-000160	RING, 16	1						1	
31	1	26018-080204	BOLT M 8X 20	2						2	
32	1	1N3503-64420	COLLAR 8.8X12X8	2						2	
33	1	1N3503-44000	RUBBER,STOPPER	2						2	
34	1	26367-080002	NUT, M8	2						2	
35	1	1N3504-64000	BAR, BODY SUPPORT	1						1	
36	1	1N3513-42160	PIN	1						1	
37	1	22137-080000	WASHER, 8	2						2	
38	1	1N3504-64020	RETAINER	1						1	
39	1	26018-080204	BOLT M 8X 20	1						1	
40	1	22417-250200	PIN, COTTER 2.5X20	1						1	
41	1	1N3503-74180	LEVER, DUMP	1						1	
42	1	1N3503-53050	GROMMET 15	2						2	

Fig.24. PLATFORM CARRIER

(A)=MCG900  
(B)=MCG900D  
(C)=MCG900D-S

(D)=MCG900D-BN  
(E)=MCG900-2  
(F)=

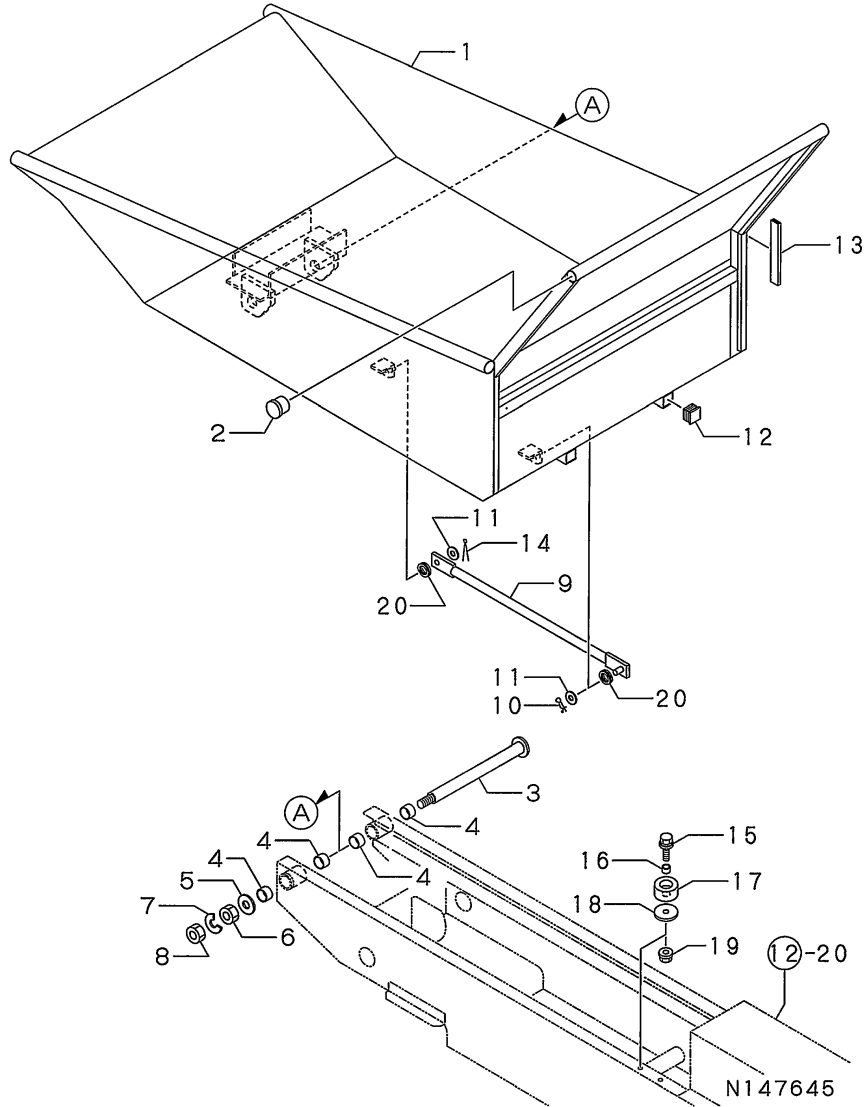


No.	Lev.	Parts No.	Description	Q'ty						I	R
				(A)	(B)	(C)	(D)	(E)	(F)		
1	1	1N3503-74000	CARRIER D,PLATFORM		1						
2	1	1N3503-65380	PLATE L,SIDE	1	1						
3	1	1N3503-65370	BOARD R,SIDE	1	1						
4	1	1N3503-64930	FIXTURE L,SIDE PLATE	1	1						
5	1	1N3503-64920	FIXTURE R,SIDE PLATE	1	1						
6	1	22272-000070	RING, E- 7	4	4						
7	1	1N3542-65050	HANDLE,SET	2	2						
8	1	26051-080002	NUT, M8	4	4						
9	1	26757-080002	NUT, LOCK M8	4	4						
10	1	1N1540-66240	LEVER,LOCK	2	2						
11	1	1N3503-66380	FRONT PLATE	1	1						
12	1	1N3503-64970	LINK, LOCK	1	1						
13	1	1N1360-22090	SCREW 8X94,ADJUST	1	1						
14	1	26757-080002	NUT, LOCK M8	1	1						
15	1	1N3503-64900	ROD A, LOCK		1						
16	1	1N1190-45000	SPRING 11X72.5,TENS.	1	1						
17	1	26117-100254	BOLT, M10X 25 PLATED	2	2						
18	1	1N3503-66350	REAR PLATE	1	1						
19	1	26018-080204	BOLT M 8X 20	4	4						
20	1	1N3503-66370	PLATE,BACK	1	1						
21	1	1N3503-66220	SCREW 6X12	5	5						
22	1	1N3503-66230	SCREW 6X12	2	2						
23	1	1N3501-65000	HANDLE 90X95,SET	2	2						
24	1	26717-100002	NUT, M10	3	3						
25	1	22217-100000	WASHER, SPRING 10	3	3						
26	1	26757-100002	NUT, LOCK M10	3	3						
27	1	22137-100000	WASHER, 10	4	4						
28	1	1N3503-68140	SHAFT		1						
29	1	1E1103-31250	LINER, R-BM2220 MID.	4	4						
30	1	22137-160000	WASHER, 16	1	1						
31	1	26717-160002	NUT, M16	1	1						
32	1	22217-160000	WASHER, SPRING 16	1	1						
33	1	26757-160002	NUT, LOCK M16	1	1						
34	1	1N3504-64000	BAR, BODY SUPPORT		1						
35	1	1N3513-42160	PIN	2	3						
36	1	22137-080000	WASHER, 8	2	4						
37	1	22417-250200	PIN, COTTER 2.5X20		1						
38	1	26347-100002	NUT, M10	2	2						
39	1	1N3503-74010	CARRIER H,PLATFORM	1							
40	1	1N3503-64910	ROD B,LOCK		1						
41	1	26018-080254	BOLT M 8X 25		2		2				
42	1	1N3503-64420	COLLAR 8.8X12X8		2		2				
43	1	1N3503-44000	RUBBER,STOPPER		2		2				
44	1	1E1100-21230	WASHER, 9.0X35X4.5		2		2				
45	1	26367-080002	NUT, M8		2		2				
46	1	1N3503-53050	GROMMET 15		2		2				

Fig.25. PLATFORM CARRIER

(A)=MCG900  
 (B)=MCG900D  
 (C)=MCG900D-S

(D)=MCG900D-BN  
 (E)=MCG900-2  
 (F)=

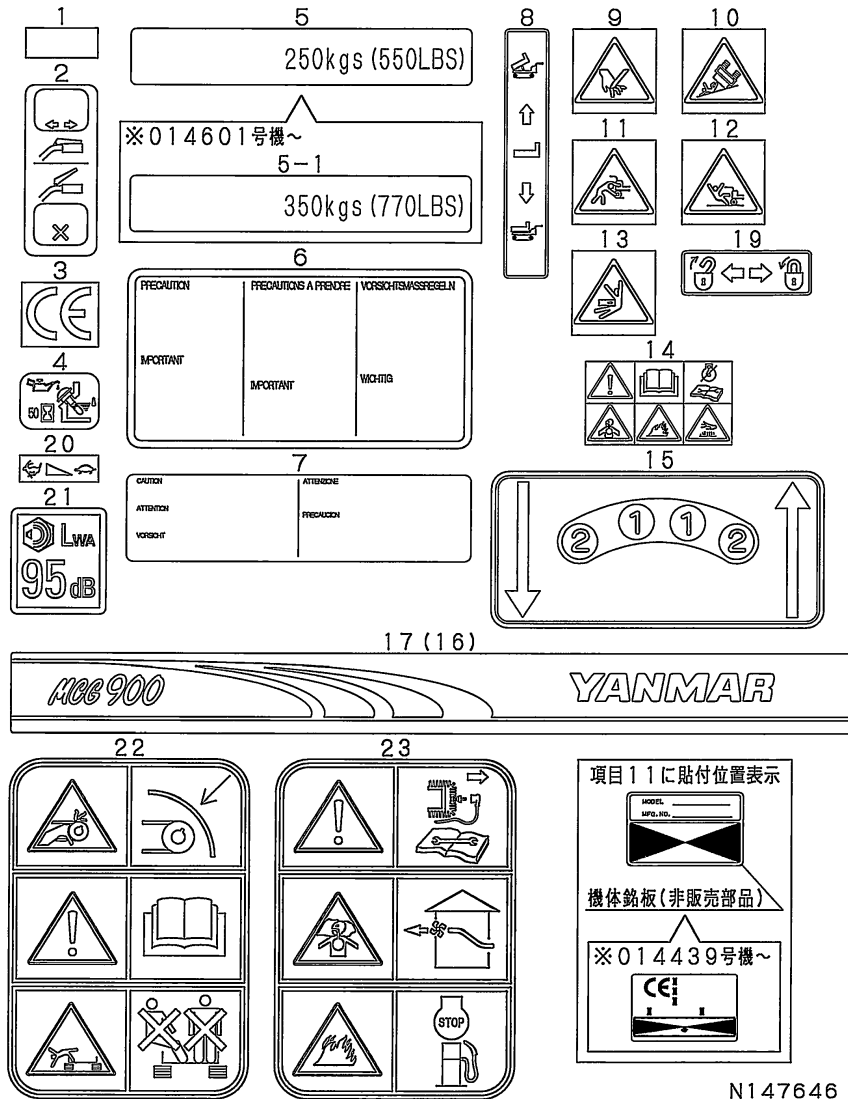


No.	Lev.	Parts No.	Description	Qty						I	R
				(A)	(B)	(C)	(D)	(E)	(F)		
1	1	1N3503-64790	CARRIER,PLATFORM			1					
2	1	1N1222-58380	PLUG			6					
3	1	1N3503-68140	SHAFT			1					
4	1	1E1103-31250	LINER, R-BM2220 MID.			4					
5	1	22137-160000	WASHER, 16			1					
6	1	26717-160002	NUT, M16			1					
7	1	22217-160000	WASHER, SPRING 16			1					
8	1	26757-160002	NUT, LOCK M16			1					
9	1	1N3504-64000	BAR, BODY SUPPORT			1					
10	1	1N3513-42160	PIN			1					
11	1	22137-080000	WASHER, 8			2					
12	1	1N3503-52040	CAP			4					
13	1	1N3520-58190	RUBBER,EDGING			2					
14	1	22417-250200	PIN, COTTER 2.5X20			1					
15	1	26018-080254	BOLT M 8X 25			2					
16	1	1N3503-64420	COLLAR 8.8X12X8			2					
17	1	1N3503-44000	RUBBER,STOPPER			2					
18	1	1E1100-21230	WASHER, 9.0X35X4.5			2					
19	1	26367-080002	NUT, M8			2					
20	1	1N3503-53050	GROMMET 15			2					

Fig.26. LABELS

(A)=MCG900  
(B)=MCG900D  
(C)=MCG900D-S

(D)=MCG900D-BN  
(E)=MCG900-2  
(F)=



N147646

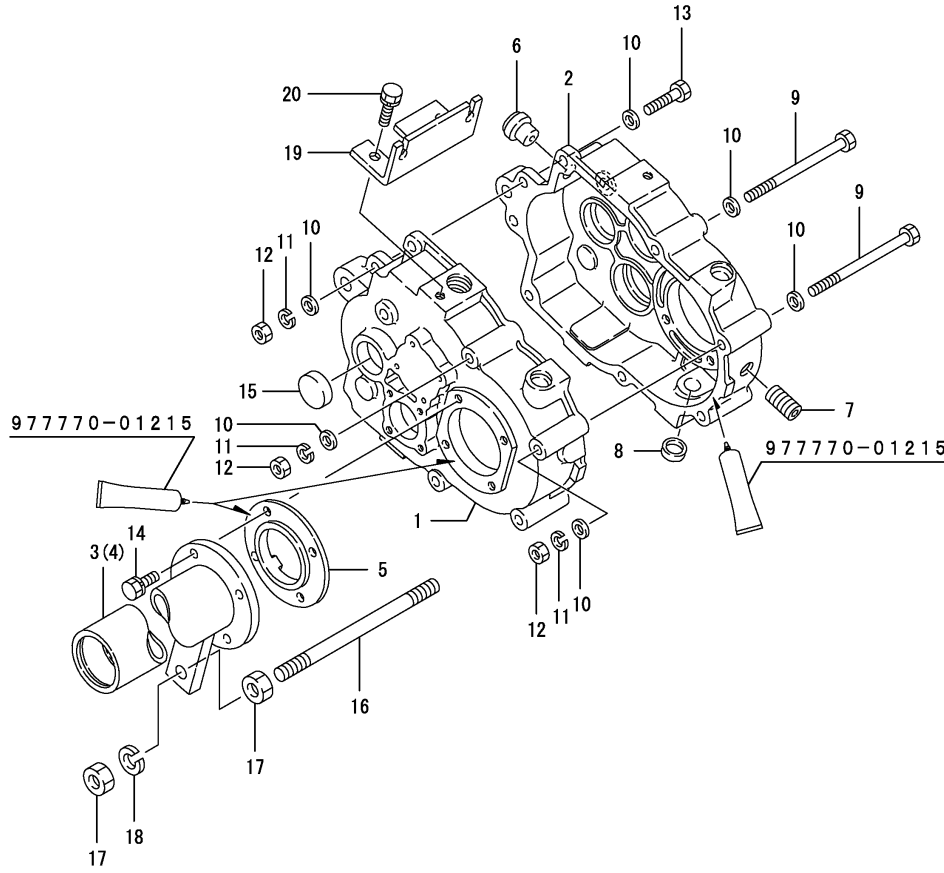
No.	Lev.	Parts No.	Description	Qty						I	R
				(A)	(B)	(C)	(D)	(E)	(F)		
1	1	1N1070-93050	TAPE, REFLECTIVE (A=FXXXXXX) (B=FXXXXXX) (C=FXXXXXX)	2	2	2		2			Z
2	1	1N3506-93260	LABEL, CLUTCH (A=F014439) (B=F014439) (C=F014439) (D=F014439)	1	1	1	1	1	1		1
3	1	1N3506-93270	LABEL CE (A=F014439) (B=F014439) (C=F014439) (D=F014439)	1	1	1	1	1	1		Z 1
4	1	1N3507-93160	LEVEL, OIL (A=F014601) (B=F014601) (C=F014601)	1	1	1	1	1	1		1
5	1	1N3500-93160	LABEL (A=F014601) (B=F014601) (C=F014601)	1	1	1		1			1
5-1	1	1N3503-93400	LABEL (A=F014601) (B=F014601) (C=F014601)	1	1	1		1			S
6	1	1N3506-93300	LABEL (A=FXXXXXX) (B=FXXXXXX) (C=FXXXXXX)	1	1	1		1			Z 1
7	1	1N3506-93310	LABEL, CRAWLER CAUTN (A=FXXXXXX) (B=FXXXXXX) (C=FXXXXXX)	1	1	1		1			Z 1
8	1	1N3503-93140	LABEL, SWITCHING (A=F014439) (B=F014439) (C=F014439) (D=F014439)	1	1	1		1			1
9	1	1N3544-93310	LABEL (A=F014439) (B=F014439) (C=F014439) (D=F014439)	1	1	1	1	1	1		Z 1
10	1	1N3544-93320	LABEL (A=F014439) (B=F014439) (C=F014439) (D=F014439)	1	1	1	1	1	1		Z 1
11	1	1N3544-93330	LABEL (A=F014439) (B=F014439) (C=F014439) (D=F014439)	1	1	1	1	1	1		Z 1
12	1	1N3544-93340	LABEL (A=F014439) (B=F014439) (C=F014439) (D=F014439)	1	1	1	1	1	1		Z 1
13	1	1N3544-93350	LABEL (A=F014439) (B=F014439) (C=F014439) (D=F014439)	1	1	1	1	1	1		Z 1
14	1	1N3544-93360	LABEL (A=F014439) (B=F014439) (C=F014439) (D=F014439)	1	1	1	1	1	1		Z 1
15	1	1N3503-93130	LABEL, CHANGE (A=F014633) (B=F014633) (C=F014633)	1	1	1	1	1	1		1
16	1	1N3503-93010	STRIPE, SIDE (A=F014633) (B=F014633) (C=F014633)	1	1	1		1			Z
17	1	1N3503-93020	STRIPE, SIDE (A=F014633) (B=F014633) (C=F014633)	1	1	1		1			1
17-1	1	1N3503-93020	STRIPE, SIDE (A=F014633) (B=F014633) (C=F014633)	2	2	2		2			K
19	1	1N3503-93150	LABEL, HYDRAULIC LOCK (A=F014439) (B=F014439) (C=F014439) (D=F014439)	1	1	1	1	1	1		1
20	1	1N3503-93190	LABEL, ACCEL (A=FXXXXXX) (B=FXXXXXX) (C=FXXXXXX) (D=FXXXXXX)	1	1	1	1	1	1		W
21	1	1N3503-93310	LABEL 95DB, NOISE (A=FXXXXXX) (B=FXXXXXX) (C=FXXXXXX) (D=FXXXXXX)	1	1	1	1	1	1		W
22	1	1N3563-93020	LABEL, SAFETY (A=F014439) (B=F014439) (C=F014439) (D=F014439)	1	1	1	1	1	1		W
23	1	1N3563-93050	LABEL, SAFETY (A=F014439) (B=F014439) (C=F014439) (D=F014439)	1	1	1	1	1	1		W



Fig.28. TRANSMISSION CASE

(A)=FT25-24F  
(B)=  
(C)=

(D)=  
(E)=  
(F)=



No.	Lev.	Parts No.	Description	Q'ty						I	R
				(A)	(B)	(C)	(D)	(E)	(F)		
1	1	1N1994-24020	CASE L,MISSION	1							
2	1	1N3503-24030	CASE R,TRANSMISSION	1							
3	1	1N3503-24000	HOLDER L,AXLE								
4	1	1N3503-24010	HOLDER R,AXLE	1							
5	1	1N3503-24020	TINE,CLUTCH	2							
6	1	1N3503-24040	PLUG, HOLED OIL	1							
7	1	1N3530-24060	PLUG PT1/4,DRAIN	1							
8	1	1N1430-24080	CAP,SEAL	2							
9	1	26117-081102	BOLT M 8X110 PLATED	4							
10	1	22137-080000	WASHER, 8	16							
11	1	22217-080000	WASHER, SPRING 8	8							
12	1	26717-080002	NUT, M8	8							
13	1	26117-080352	BOLT M 8X 35 PLATED	4							
14	1	26016-080204	BOLT M 8X 20	8							
15	1	1N1430-24000	PLUG, BLIND	1							
16	1	1N1296-24020	SCREW M12X180	1							
17	1	26717-120002	NUT, M12	4							
18	1	22217-120000	WASHER, SPRING 12	2							
19	1	1N3500-24030	BRACKET, OUTER	1							
20	1	26016-080164	BOLT M 8X 16	2							

Remarks  
\* 7N3503-20000 TRANSMISSION ASSY.

Fig.29. MAIN SHAFT

(A)=FT25-24F  
(B)=  
(C)=

(D)=  
(E)=  
(F)=

No.	Lev.	Parts No.	Description	Q'ty						I	R
				(A)	(B)	(C)	(D)	(E)	(F)		
1	1	1N3503-25000	SHAFT	1							
2	1	1N3503-25010	GEAR 15-18	1							
3	1	24421-153007	SEAL TC15 30 07, OIL	1							
4	1	24101-062024	BEARING, BALL 6202	1							
5	1	1N3503-25020	GEAR 31	1							
6	1	24101-060034	BEARING, BALL 6003	1							
7	1	1N3503-25260	BUSH 161810	1							

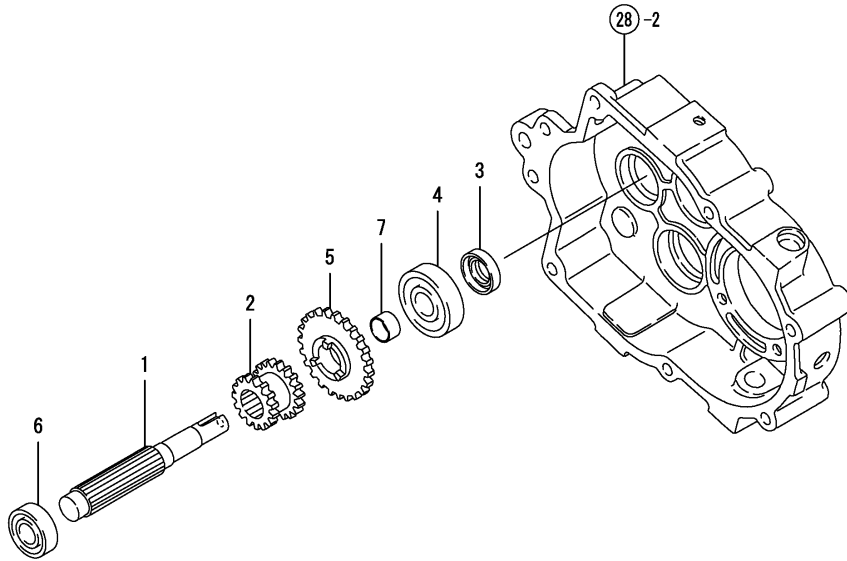




Fig.30. TRANSMISSION SHAFT B

(A)=FT25-24F  
(B)=  
(C)=

(D)=  
(E)=  
(F)=

No.	Lev.	Parts No.	Description	Q'ty						I	R
				(A)	(B)	(C)	(D)	(E)	(F)		
1	1	1N3503-25030	SHAFT, 2ND	1							
2	1	1N3503-25040	GEAR 39	1							
3	1	1N3503-25050	GEAR 25	1							
4	1	1N3503-25060	GEAR 25	1							
5	1	1N3503-25070	GEAR 15	1							
6	1	24101-062034	BEARING, BALL 6203	2							
7	1	1N3503-25080	COLLAR	1							
8	1	1N3503-25090	COLLAR	1							
9	1	1N3503-25100	COLLAR	1							
10	1	24421-173507	SEAL, OIL TC173507	1							
11	1	1N3503-25280	LINER	1							

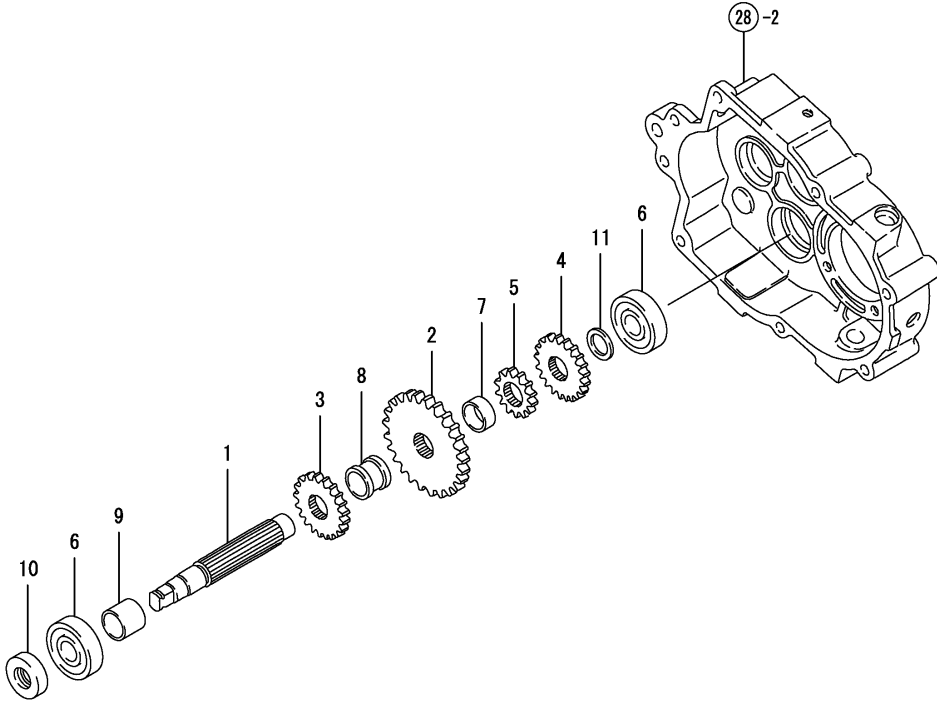


Fig.31. SIDE CLUTCH SHAFT

(A)=FT25-24F  
(B)=  
(C)=

(D)=  
(E)=  
(F)=

No.	Lev.	Parts No.	Description	Q'ty						I	R
				(A)	(B)	(C)	(D)	(E)	(F)		
1	1	1N3503-25110	SHAFT, 3RD	1							
2	1	1N3503-25120	GEAR 31-41	1							
3	1	24101-062034	BEARING, BALL 6203	2							
4	1	1N3503-25130	GEAR 41	1							
5	1	1N3503-25140	GEAR 41	1							
6	1	22242-000170	RING, 17	1							
7	1	1N3503-25270	BUSH 222512	1							
8	1	1N3503-25300	COLLAR	1							

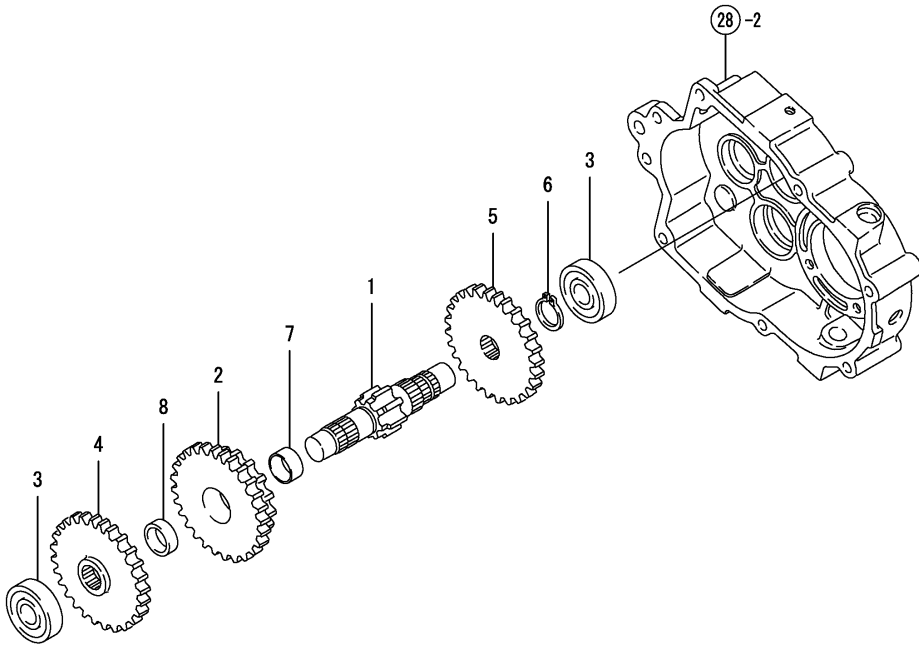
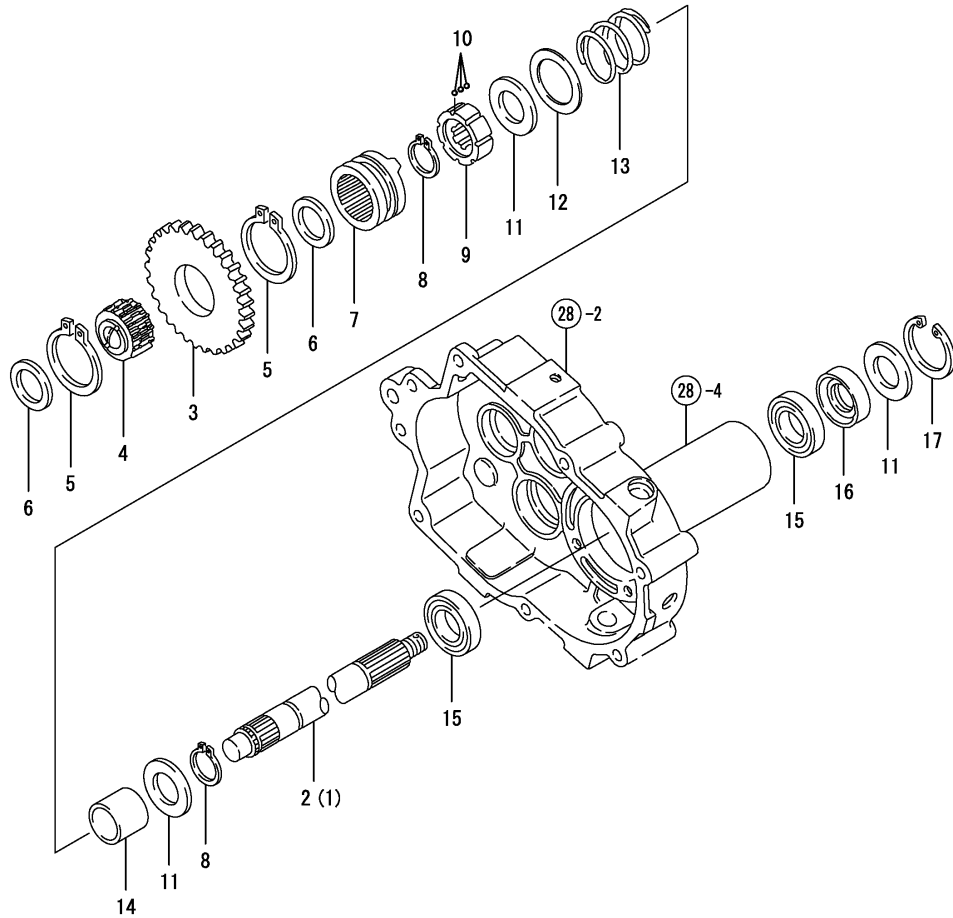


Fig.32. AXLE



(A)=FT25-24F  
(B)=  
(C)=

(D)=  
(E)=  
(F)=

No.	Lev.	Parts No.	Description	Q'ty						I	R
				(A)	(B)	(C)	(D)	(E)	(F)		
1	1	1N3503-25150	SHAFT(L)	1							
2	1	1N3503-25160	AXLE R	1							
3	1	1N3503-25170	GEAR 46	1							
4	1	1N1291-25110	GEAR 28,CLUTCH	1							
5	1	22242-000500	RING, 50	2							
6	1	1N1291-25120	PLATE,BALL SUPPORTG	2							
7	1	1N1291-25135	GEAR 28,SIDE CLUTCH	2							
8	1	22242-000250	RING, 25	4							
9	1	1N1291-25140	BOSS,DRIVE	2							
10	1	1N1291-25150	BALL 4,STEEL	42							
11	1	1N1291-25200	COVER,OIL SEAL	6							
12	1	1N1291-25170	LINER 2.0X35.5X50	2							
13	1	1N1291-25180	SPRING,CLUTCH	2							
14	1	1N1291-25190	COLLAR 25.2X31.8X27.	2							
15	1	24101-060054	BEARING, BALL 6005	4							
16	1	24421-254708	SEAL, OIL TC254708	2							
17	1	22252-000470	RING, 47	2							

Fig.33. BRAKE

(A)=FT25-24F  
(B)=  
(C)=

(D)=  
(E)=  
(F)=

No.	Lev.	Parts No.	Description	Qty						I	R
				(A)	(B)	(C)	(D)	(E)	(F)		
1	1	1N3503-25220	MOUNT,BRAKE	1							
2	1	26557-060122	SCREW, M6X12	4							
3	1	22217-060000	WASHER, SPRING 6	4							
4	1	1N3503-25230	DRUM, BREAK	1							
5	1	22242-000140	RING, 14	1							
6	1	1N1291-25230	PACKING,BRAKE PLATE	1							
7	1	1N3503-25250	PLATE COMP.,BRAKE	1							
8	1	7N3503-25000	BRAKE SHOE ASSY.	1							
9	1	1N3503-25240	BOLT 6X12	3							
10	1	22217-060000	WASHER, SPRING 6	3							
11	1	22137-060000	WASHER, 6	3							

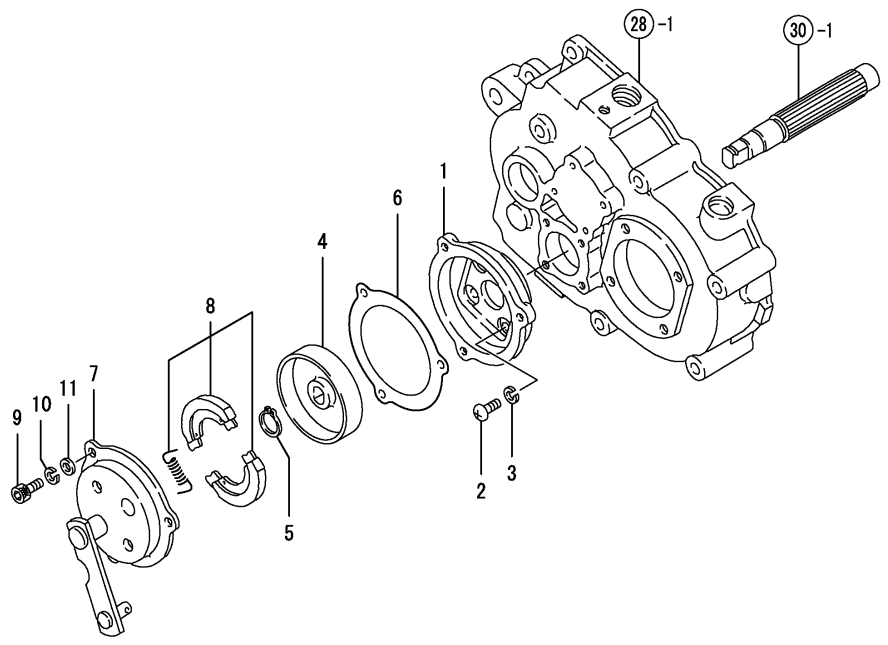
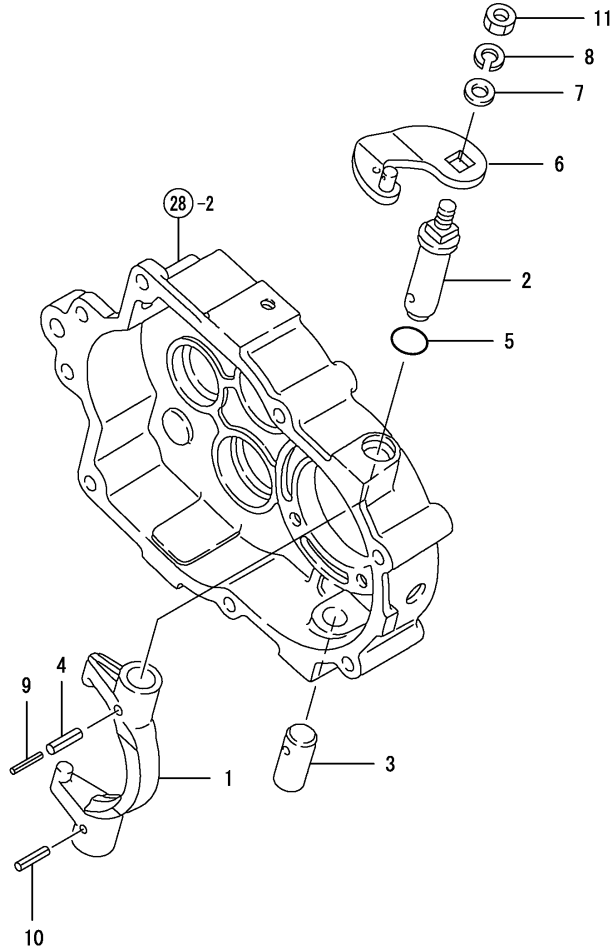


Fig.34. SIDE CLUTCH

(A)=FT25-24F  
(B)=  
(C)=

(D)=  
(E)=  
(F)=



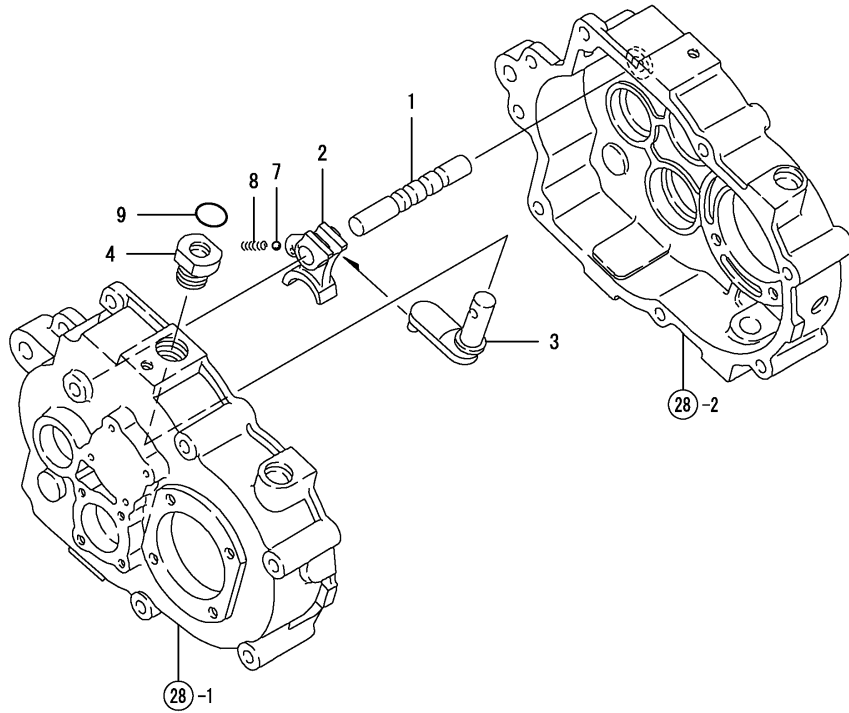
No.	Lev.	Parts No.	Description	Q'ty						I	R
				(A)	(B)	(C)	(D)	(E)	(F)		
1	1	1N3503-25180	LEVER	2							
2	1	1N3503-25190	PIN,SHIFT LEVER UPPR	2							
3	1	1N1296-25070	PIN,SHIFT LEVER LOWR	2							
4	1	22351-060022	PIN, SPRING 6.0X22	2							
5	1	24311-000140	O-RING, 1AP14.0	2							
6	1	1N3503-25210	SIDE CLUTCH LEVER	2							
7	1	22137-080000	WASHER, 8	2							
8	1	22217-080000	WASHER, SPRING 8	2							
9	1	22351-035022	PIN, SPRING 3.5X22	2							
10	1	1N3503-25310	PIN,ROLL 5X22	2							
11	1	26717-080002	NUT, M8	2							

Fig.35. MAIN CHANGE

(A)=FT25-24F  
(B)=  
(C)=

(D)=  
(E)=  
(F)=

No.	Lev.	Parts No.	Description	Q'ty						I	R
				(A)	(B)	(C)	(D)	(E)	(F)		
1	1	1N3503-26000	SHIFTER ROD	1							
2	1	1N3503-26010	SHIFTER,GEAR	1							
3	1	1N3503-26020	SHIFT LEVER	1							
4	1	1N1291-26030	GUIDE,SHIFT LEVER	1							
7	1	1N1150-25010	BALL 8,STEEL	1							
8	1	1N1291-26040	SPRING,FORK	1							
9	1	24311-000140	O-RING, 1AP14.0	1							



## Parts No. Index

Parts No.	Fig. No.	Ref. No.
106990-44660	6	22
114250-12300	4	10 -1
114250-21290	5	10
114270-01600	1	5
114770-61600	8	5
119520-03990	6	25 -1
124060-77680	6	25
160110-92610	3	8
160110-92710	3	10
160120-76940	8	10
		22
160120-92700	3	9
160260-78700	6	26
160393-55050	6	10
160490-01760	1	21 -1
160490-11010	2	7
160490-11120	2	14
160490-11290	2	20
160490-11300	2	21
160490-11310	2	22
160490-11311	2	22 -1
160490-12500	4	3
160490-12520	4	4
160490-13570	4	13
160490-13580	4	11
160490-14200	5	11
160490-14400	5	12
160490-22300	5	26
160490-23030	5	28
160490-45010	9	28
160490-45140	9	1
160490-45220	9	4
160490-45230	9	3
160490-45240	9	25
160490-56900	7	26
160490-59351	6	23
160490-59361	6	24
160490-66020	8	12
160490-66190	8	25
160490-66200	8	28
160490-66211	8	29
160490-76060	9	10
160490-76270	9	11
160490-76511	9	13
160490-76580	9	21
160490-76591	9	23
160490-76600	9	22
160490-76620	9	12
160490-78230	9	24
160490-78540	9	30

Parts No.	Fig. No.	Ref. No.
160490-78550	9	31
160492-12050	4	2
160492-66100	8	13
160493-56530	7	18
160493-56550	7	16
160493-56610	7	3
160493-56620	7	6
160493-56630	7	7
160493-56650	7	17
160493-56700	7	20
160493-56710	7	19
160493-56730	7	9
160493-56740	7	10
160493-56752	7	11
160493-56790	7	12
160493-56800	7	21
160493-56820	7	22
160493-56850	7	13
160498-01330	2	4
160498-14050	5	1
160498-22010	5	20
160498-55910	7	25
160498-56071	7	1
160498-56540	7	15
160498-56640	7	14
160498-56840	7	4
160510-02220	1	8
		15
160510-03180	2	3
160510-13200	4	9
160510-14550	5	30
160520-03050	2	1
160520-66291	8	20
160530-21200	5	16
160590-21210	5	17
160610-03050	2	2
160610-04201	2	5
160610-04570	4	1
160610-04620	2	6
160610-12530	4	5
160610-12540	4	6
160610-12550	4	7
160610-21290	5	18
		33
160610-55100	6	11
160611-01740	1	19
160611-01741	1	19 -1
160611-14560	5	9
160611-77250	9	38
160664-07370	3	6

Parts No.	Fig. No.	Ref. No.
160664-11100	2	12
160664-11110	2	13
160664-11180	2	15
160664-66220	8	19
160667-56151	7	23
160667-56160	7	24
160670-66350	8	21
160690-04610	4	1 -2
160690-07260	3	5
160690-11221	2	17
160690-11271	2	18
160690-11280	2	19
160690-61301	8	2
160690-61311	8	3
160690-61450	8	4
		4 -1
160690-61600	8	6
160690-76531	9	15
160690-76540	9	16
160690-76561	9	17
160690-76570	9	18
160690-76801	9	14
160692-55300	6	13
160692-66051	8	14
160698-76580	9	19
160699-11200	2	16
160700-78040	9	35
160700-78050	9	36
160700-78720	9	37
160708-55150	6	12
160710-55061	6	3
160710-55360	6	16
160710-55370	6	17
160710-55382	6	18
160710-55390	6	19
160790-04600	4	1 -1
160793-78010	9	34
160798-07100	3	4
160798-66210	8	29 -1
160810-21290	5	31
160991-07260	3	3
1E1100-21230	24	44
	25	18
1E1102-71190	14	25
1E1103-31250	24	29
	25	4
1E1107-62040	14	24
1E4490-51701	19	1
1E6020-83890	11	10
1N1070-91010	27	1

Parts No.	Fig. No.	Ref. No.
1N1070-91020	27	2
1N1070-91090	27	3
1N1070-93050	26	1
1N1090-21010	11	29
1N1090-61030	22	3
1N1091-36000	14	8
1N1101-44010	18	2
1N1101-44040	10	8
1N1150-25010	35	7
1N1151-53020	23	8
		10
1N1185-53000	12	18
1N1190-45000	10	6
	23	29
	24	16
1N1210-16060	21	4
1N1210-42040	17	4
1N1215-51000	23	26
1N1215-61001	22	7
1N1216-44010	21	15
1N1222-58380	25	2
1N1240-21040	11	4
1N1277-61020	21	1 A
1N1277-61031	21	1 C
1N1285-61000	21	18
1N1286-61110	22	4
1N1286-61130	22	5
1N1291-22020	11	7
1N1291-25110	32	4
1N1291-25120	32	6
1N1291-25135	32	7
1N1291-25140	32	9
1N1291-25150	32	10
1N1291-25170	32	12
1N1291-25180	32	13
1N1291-25190	32	14
1N1291-25200	32	11
1N1291-25230	33	6
1N1291-26030	35	4
1N1291-26040	35	8
1N1291-58080	11	21
	12	12
	21	20
		25
1N1296-24020	28	16
1N1296-25070	34	3
1N1313-44000	15	2
1N1360-22090	24	13
1N1386-45130	21	17
1N1430-22070	10	2

## Parts No. Index

Parts No.	Fig. No.	Ref. No.
1N1430-24000	28	15
1N1430-24080	28	8
1N1520-53020	23	4
		6
1N1526-61040	22	14
1N1540-66240	24	10
1N1723-31360	20	1
1N1994-24020	28	1
1N3500-24030	28	19
1N3500-61010	22	1
1N3500-93160	26	5
1N3501-35020	14	4
1N3501-35030	14	16
1N3501-36010	14	3
1N3501-65000	24	23
1N3503-16000	11	14
1N3503-16020	11	28
1N3503-21000	11	1
1N3503-21010	11	22
1N3503-21030	11	30
1N3503-22000	10	1
1N3503-22030	10	9
1N3503-22050	11	11
1N3503-24000	28	3
1N3503-24010	28	4
1N3503-24020	28	5
1N3503-24030	28	2
1N3503-24040	28	6
1N3503-25000	29	1
1N3503-25010	29	2
1N3503-25020	29	5
1N3503-25030	30	1
1N3503-25040	30	2
1N3503-25050	30	3
1N3503-25060	30	4
1N3503-25070	30	5
1N3503-25080	30	7
1N3503-25090	30	8
1N3503-25100	30	9
1N3503-25110	31	1
1N3503-25120	31	2
1N3503-25130	31	4
1N3503-25140	31	5
1N3503-25150	32	1
1N3503-25160	32	2
1N3503-25170	32	3
1N3503-25180	34	1
1N3503-25190	34	2
1N3503-25210	34	6
1N3503-25220	33	1

Parts No.	Fig. No.	Ref. No.
1N3503-25230	33	4
1N3503-25240	33	9
1N3503-25250	33	7
1N3503-25260	29	7
1N3503-25270	31	7
1N3503-25280	30	11
1N3503-25300	31	8
1N3503-25310	34	10
1N3503-26000	35	1
1N3503-26010	35	2
1N3503-26020	35	3
1N3503-31000	12	1
1N3503-31150	12	27
1N3503-31290	12	20
1N3503-35000	13	8
1N3503-35060	14	11
1N3503-35070	13	2
1N3503-35080	13	16
1N3503-36000	14	22
1N3503-37000	13	7
1N3503-41000	18	1
1N3503-42000	16	1
1N3503-42001	16	1 -1
1N3503-42040	20	2
1N3503-42070	20	9
1N3503-42071	20	9 -1
1N3503-44000	23	33
	24	43
	25	17
1N3503-44010	23	22
1N3503-45060	21	14
1N3503-45090	21	24
1N3503-47000	15	1
1N3503-47001	15	1 -1
1N3503-51010	15	6 A
1N3503-51020	16	6
1N3503-51050	23	24
1N3503-51060	23	23
1N3503-51070	17	1
1N3503-51100	19	3
1N3503-52040	25	12
1N3503-53000	17	3
1N3503-53010	16	5
1N3503-53020	16	4
1N3503-53030	17	7
1N3503-53050	23	42
	24	46
	25	20
1N3503-54001	12	13
1N3503-54050	12	2

Parts No.	Fig. No.	Ref. No.
1N3503-54071	12	3
1N3503-54080	12	21
1N3503-54090	12	22
1N3503-54100	21	11
1N3503-54110	12	25
1N3503-58000	12	11
1N3503-58021	12	8
1N3503-58031	11	17
1N3503-58040	12	9
1N3503-58051	12	16
1N3503-58070	11	18
1N3503-58120	11	19
1N3503-58160	12	23
1N3503-58170	12	24
1N3503-58190	11	25
1N3503-58220	11	24
1N3503-61000	22	13
1N3503-64001	23	1
1N3503-64140	23	25
1N3503-64160	23	21
1N3503-64420	23	32
	24	42
	25	16
1N3503-64790	25	1
1N3503-64900	24	15
1N3503-64910	24	40
1N3503-64920	24	5
1N3503-64930	24	4
1N3503-64970	24	12
1N3503-65000	23	2
1N3503-65070	23	3
1N3503-65370	24	3
1N3503-65380	24	2
1N3503-66000	23	5
1N3503-66060	23	11
1N3503-66100	23	14
1N3503-66220	23	15
	24	21
1N3503-66230	23	16
	24	22
1N3503-66350	24	18
1N3503-66370	24	20
1N3503-66380	24	11
1N3503-68140	24	28
	25	3
1N3503-74000	24	1
1N3503-74010	24	39
1N3503-74180	23	41
1N3503-93010	26	16
1N3503-93020	26	17

Parts No.	Fig. No.	Ref. No.
1N3503-93020	26	17 -1
1N3503-93130	26	15
1N3503-93140	26	8
1N3503-93150	26	19
1N3503-93190	26	20
1N3503-93310	26	21
1N3503-93400	26	5 -1
1N3503-95101	27	4
1N3504-41110	15	3
1N3504-45000	21	8
1N3504-45050	21	19
1N3504-45070	21	21
1N3504-53000	14	12
1N3504-64000	23	35
	24	34
	25	9
1N3504-64020	23	38
1N3505-21020	21	2
1N3505-33040	14	23
1N3506-35020	13	6
1N3506-93260	26	2
1N3506-93270	26	3
1N3506-93300	26	6
1N3506-93310	26	7
1N3507-93160	26	4
1N3512-61040	22	6
1N3513-42160	16	8
	23	36
	24	35
	25	10
1N3513-69050	11	20
	12	10
		17
1N3520-58190	11	26
	25	13
1N3530-24060	28	7
1N3542-65050	24	7
1N3544-61020	22	10
1N3544-93310	26	9
1N3544-93320	26	10
1N3544-93330	26	11
1N3544-93340	26	12
1N3544-93350	26	13
1N3544-93360	26	14
1N3560-21010	11	3
1N3561-51070	15	7
1N3563-93020	26	22
1N3563-93050	26	23
1N3580-16000	11	27
22137-060000	23	27



## Parts No. Index

Parts No.	Fig. No.	Ref. No.
22137-060000	33	11
22137-080000	11	12
		15
	16	7
	17	5
	19	4
	20	4
	23	37
	24	36
	25	11
	28	10
	34	7
22137-100000	14	20
	16	2
	24	27
22137-120000	13	13
	14	9
22137-140000	12	6
	23	18
22137-160000	14	13
	24	30
	25	5
22137-180000	22	8
		11
22217-060000	33	3
		10
22217-080000	28	11
	34	8
22217-100000	21	5
	24	25
22217-120000	13	12
	14	9 A
		26
	28	18
22217-140000	12	5
	13	10
	23	19 A
22217-160000	24	32
	25	7
22242-000100	16	3
	17	2
22242-000140	33	5
22242-000150	10	3
	14	6
22242-000160	10	7
	23	30
22242-000170	31	6
22242-000250	13	5
	32	8
22242-000500	32	5

Parts No.	Fig. No.	Ref. No.
22252-000120	5	27
22252-000350	10	5
22252-000470	32	17
22272-000070	24	6
22351-035022	34	9
22351-035030	18	4
22351-060022	34	4
22351-060030	18	3
22360-060000	23	28
22372-080000	8	11
22417-250200	17	6
	19	5
	20	10
	23	40
	24	37
	25	14
22417-400400	14	15
	22	9
		12
22550-050180	21	7
22550-050201	11	6
22859-500080	4	14
24101-060024	14	5
24101-060034	29	6
24101-060054	13	3
	32	15
24101-062024	29	4
24101-062030	1	9
		16
24101-062034	30	6
	31	3
24104-062024	10	4
24311-000100	1	6
		13
24311-000140	34	5
	35	9
24311-000150	1	21
24321-001200	21	1 B
24421-153007	29	3
24421-153206	14	7
24421-173507	30	10
24421-254708	32	16
24421-304707	13	4
25113-001900	21	3
25113-002000	21	26
25123-002601	11	2
25123-002801	11	23
26014-060259	19	2
26016-060164	11	5
26016-080164	28	20

Parts No.	Fig. No.	Ref. No.
26016-080204	28	14
26018-060164	22	15
26018-080164	11	8
		9
	12	14
	21	10
26018-080204	12	26
		28
	20	7
	21	9
		12
	23	13
		31
		39
	24	19
26018-080254	23	12
	24	41
	25	15
26018-100254	12	7
		19
26051-080002	11	13
		16
	24	8
26051-100002	21	16
26052-100002	14	17
26106-060082	9	27
26106-060102	6	20
26106-060162	5	32
26106-060302	5	29
26106-100162	1	7
		14
26116-080552	20	3
26117-040088	8	18
26117-040257	8	23
26117-080352	28	13
26117-080504	21	22
26117-081102	28	9
26117-100164	21	6
26117-100254	15	4
	24	17
26117-100702	14	19
26117-120254	13	11
	14	27
26117-140454	12	4
26117-140902	23	17
26117-141504	13	9
26117-143102	13	14
26226-060752	4	1 -3
26347-060002	8	24
26347-080002	20	5

Parts No.	Fig. No.	Ref. No.
26347-100002	24	38
26366-060002	4	8
		10
	8	27
26366-080002	9	39
26367-060002	22	16
26367-080002	12	15
		29
	20	8
	21	13
	23	34
	24	45
	25	19
26376-120002	5	19
26476-060142	2	23
	6	21
	9	2
		7
		8
		26
26476-060202	1	18
26476-060302	9	32
26557-060122	33	2
26647-100302	23	9
26647-100352	23	7
26717-080002	28	12
	34	11
26717-100002	24	24
26717-120002	14	10
	28	17
26717-140002	23	19
26717-160002	24	31
	25	6
26757-080002	20	6
	21	23
	24	9
		14
26757-100002	14	18
		21
	15	5
	24	26
26757-140002	13	15
	23	20
26757-160002	24	33
	25	8
26817-160002	14	14
28110-100120	3	11
29610-000650	9	33
29610-000950	9	6
29610-001400	9	9

# Parts No. Index

Parts No.	Fig. No.	Ref. No.
760490-01500	1	10
760490-55700-1	6	1
760498-01560	1	1
760498-21700	5	13
760498-22500	5	22
7N1277-61000	21	1
7N1700-61010	22	2
7N3501-36000	14	2
7N3501-36010	14	1
7N3503-25000	33	8
7N3503-35000	13	1
7N3561-51000	15	6

Parts No.	Fig. No.	Ref. No.
-----------	----------	----------

Parts No.	Fig. No.	Ref. No.
-----------	----------	----------

Parts No.	Fig. No.	Ref. No.
-----------	----------	----------